



**ELECTRONIC COPY**

LG772608936  
Report verification at igi.org



February 6, 2026

IGI Report Number **LG772608936**

Description **LABORATORY GROWN DIAMOND**

Shape and Cutting Style **ROUND BRILLIANT**

Measurements **10.65 - 10.69 X 6.52 MM**

**GRADING RESULTS**

Carat Weight **4.58 CARATS**

Color Grade **F**

Clarity Grade **VS 1**

Cut Grade **IDEAL**

February 6, 2026  
IGI Report Number **LG772608936**  
Description **LABORATORY GROWN DIAMOND**  
Shape and Cutting Style **ROUND BRILLIANT**  
Measurements **10.65 - 10.69 X 6.52 MM**

**GRADING RESULTS**

Carat Weight **4.58 CARATS**

Color Grade **F**

Clarity Grade **VS 1**

Cut Grade **IDEAL**

**ADDITIONAL GRADING INFORMATION**

Polish **EXCELLENT**

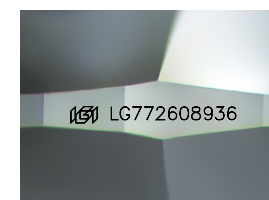
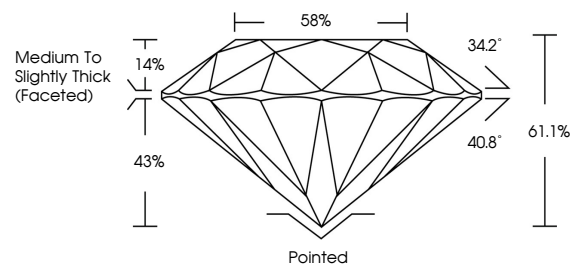
Symmetry **EXCELLENT**

Fluorescence **NONE**

Inscription(s) **IGI LG772608936**

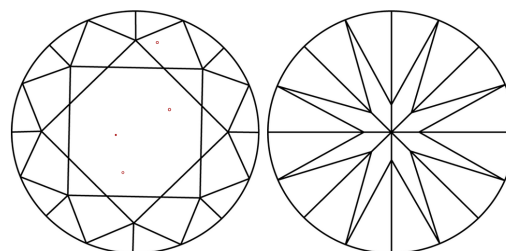
Comments: This Laboratory Grown Diamond was created by Chemical Vapor Deposition (CVD) growth process. Type IIa

**PROPORTIONS**



Sample Image Used

**CLARITY CHARACTERISTICS**



**KEY TO SYMBOLS**

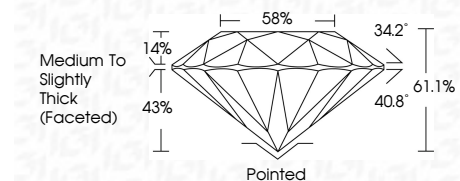
Red symbols indicate internal characteristics.  
Green symbols indicate external characteristics.

**COLOR**

D E F G H I J Faint Very Light Light

**CLARITY**

| FL       | IF                  | VS <sup>1-2</sup>           | VS <sup>1-2</sup>      | SI <sup>1-2</sup> | I <sup>1-3</sup> |
|----------|---------------------|-----------------------------|------------------------|-------------------|------------------|
| Flawless | Internally Flawless | Very Very Slightly Included | Very Slightly Included | Slightly Included | Included         |



**ADDITIONAL GRADING INFORMATION**

Polish **EXCELLENT**

Symmetry **EXCELLENT**

Fluorescence **NONE**

Inscription(s) **IGI LG772608936**

Comments: This Laboratory Grown Diamond was created by Chemical Vapor Deposition (CVD) growth process. Type IIa



**IGI**



|                  |                           |                 |                         |             |     |      |       |       |     |                                    |         |           |           |      |                 |
|------------------|---------------------------|-----------------|-------------------------|-------------|-----|------|-------|-------|-----|------------------------------------|---------|-----------|-----------|------|-----------------|
| February 6, 2026 | IGI Report No LG772608936 | ROUND BRILLIANT | 10.65 - 10.69 X 6.52 MM | 4.58 CARATS | F   | VS 1 | IDEAL | 61.1% | 58% | Medium To Slightly Thick (Faceted) | Pointed | EXCELLENT | EXCELLENT | NONE | IGI LG772608936 |
| IGI              | IGI                       | IGI             | IGI                     | IGI         | IGI | IGI  | IGI   | IGI   | IGI | IGI                                | IGI     | IGI       | IGI       | IGI  | IGI             |

Comments: This Laboratory Grown Diamond was created by Chemical Vapor Deposition (CVD) growth process. Type IIa