



**ELECTRONIC COPY**

LG772609576  
Report verification at igi.org



February 10, 2026

IGI Report Number **LG772609576**

Description **LABORATORY GROWN DIAMOND**

Shape and Cutting Style **ROUND BRILLIANT**

Measurements **7.51 - 7.55 X 4.55 MM**

**GRADING RESULTS**

Carat Weight **1.57 CARAT**

Color Grade **D**

Clarity Grade **VS 1**

Cut Grade **IDEAL**

February 10, 2026

IGI Report Number **LG772609576**

Description **LABORATORY GROWN DIAMOND**

Shape and Cutting Style **ROUND BRILLIANT**

Measurements **7.51 - 7.55 X 4.55 MM**

**GRADING RESULTS**

Carat Weight **1.57 CARAT**

Color Grade **D**

Clarity Grade **VS 1**

Cut Grade **IDEAL**

**ADDITIONAL GRADING INFORMATION**

Polish **EXCELLENT**

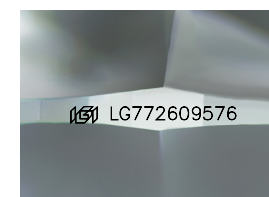
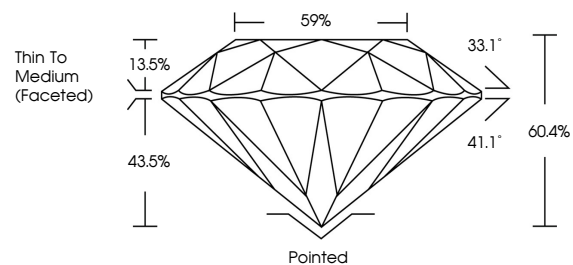
Symmetry **EXCELLENT**

Fluorescence **NONE**

Inscription(s) **IGI LG772609576**

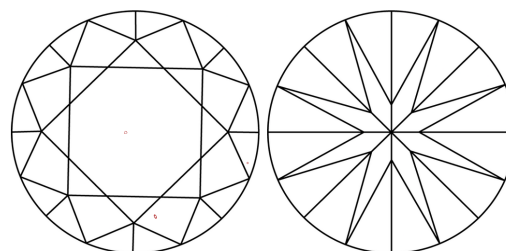
Comments: This Laboratory Grown Diamond was created by Chemical Vapor Deposition (CVD) growth process.  
Type IIa

**PROPORTIONS**



Sample Image Used

**CLARITY CHARACTERISTICS**



**KEY TO SYMBOLS**

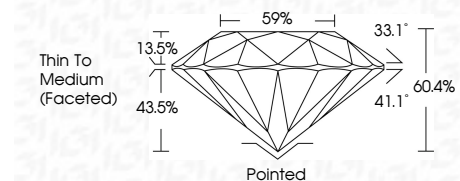
Red symbols indicate internal characteristics.  
Green symbols indicate external characteristics.

**COLOR**

D E F G H I J Faint Very Light Light

**CLARITY**

FL	IF	VS <sup>1-2</sup>	VS <sup>1-2</sup>	SI <sup>1-2</sup>	I <sup>1-3</sup>
Flawless	Internally Flawless	Very Very Slightly Included	Very Slightly Included	Slightly Included	Included



**ADDITIONAL GRADING INFORMATION**

Polish **EXCELLENT**

Symmetry **EXCELLENT**

Fluorescence **NONE**

Inscription(s) **IGI LG772609576**

Comments: This Laboratory Grown Diamond was created by Chemical Vapor Deposition (CVD) growth process.  
Type IIa



**IGI**



February 10, 2026	IGI Report No LG772609576	1.57 CARAT	D
ROUND BRILLIANT	7.51 - 7.55 X 4.55 MM	VS 1	IDEAL
Color Grade	Depth	60.4%	59%
Clarity Grade	Table	43.5%	Thin To Medium (Faceted)
Cut Grade	Polish	EXCELLENT	Pointed
Symmetry	Symmetry	EXCELLENT	EXCELLENT
Fluorescence	Fluorescence	NONE	NONE
Inscription(s)	Inscription(s)	IGI LG772609576	

Comments: This Laboratory Grown Diamond was created by Chemical Vapor Deposition (CVD) growth process.  
Type IIa