



March 4, 2026

**IGI Report Number LG772614811**  
**CUT CORNERED RECTANGULAR  
MODIFIED BRILLIANT**  
**LABORATORY GROWN DIAMOND**  
**7.73 X 4.53 X 3.13 MM**

**Carat Weight 0.99 CARAT**  
**Color Grade F**  
**Clarity Grade VVS 2**  
**Polish VERY GOOD**  
**Symmetry VERY GOOD**  
**Fluorescence NONE**  
**Inscription(s) LG772614811**

Comments: This Laboratory Grown Diamond was created by Chemical Vapor Deposition (CVD) growth process. Type IIa

**LABORATORY GROWN DIAMOND REPORT**

March 4, 2026

IGI Report Number

**LG772614811**

Description

**LABORATORY GROWN DIAMOND**

Shape and Cutting Style

**CUT CORNERED RECTANGULAR MODIFIED  
BRILLIANT**

Measurements

**7.73 X 4.53 X 3.13 MM**

**GRADING RESULTS**

Carat Weight

**0.99 CARAT**

Color Grade

**F**

Clarity Grade

**VVS 2**

**ADDITIONAL GRADING INFORMATION**

Polish

**VERY GOOD**

Symmetry

**VERY GOOD**

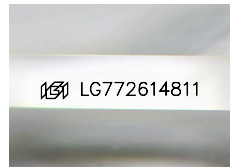
Fluorescence

**NONE**

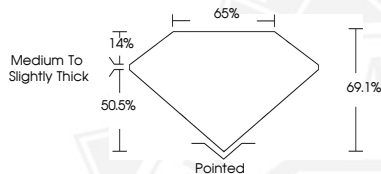
Inscription(s)

**LG772614811**

Comments: This Laboratory Grown Diamond was created by Chemical Vapor Deposition (CVD) growth process. Type IIa



Sample Image Used



March 4, 2026

**IGI Report Number LG772614811**  
**CUT CORNERED RECTANGULAR  
MODIFIED BRILLIANT**  
**LABORATORY GROWN DIAMOND**  
**7.73 X 4.53 X 3.13 MM**

**Carat Weight 0.99 CARAT**  
**Color Grade F**  
**Clarity Grade VVS 2**  
**Polish VERY GOOD**  
**Symmetry VERY GOOD**  
**Fluorescence NONE**  
**Inscription(s) LG772614811**

Comments: This Laboratory Grown Diamond was created by Chemical Vapor Deposition (CVD) growth process. Type IIa



THIS DOCUMENT WAS PRODUCED WITH THE FOLLOWING SECURITY MEASURES: SPECIAL DOCUMENT PAPER, INK SCREENS, WATERMARK, BACKGROUND DESIGNS, HOLOGRAM AND OTHER SECURITY FEATURES NOT LISTED AND DO EXCEED DOCUMENT SECURITY INDUSTRY GUIDELINES.