



LABORATORY GROWN DIAMOND REPORT

March 6, 2026
 IGI Report Number **LG772614894**
 Description **LABORATORY GROWN DIAMOND**
 Shape and Cutting Style **EMERALD CUT**
 Measurements **5.06 X 3.06 X 2.25 MM**

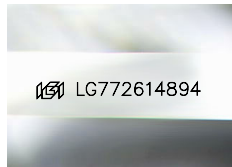
GRADING RESULTS

Carat Weight **0.34 CARAT**
 Color Grade **G**
 Clarity Grade **INTERNALLY FLAWLESS**

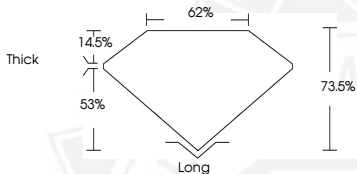
ADDITIONAL GRADING INFORMATION

Polish **VERY GOOD**
 Symmetry **EXCELLENT**
 Fluorescence **NONE**
 Inscription(s) **IGI LG772614894**

Comments: As Grown - No indication of post-growth treatment.
 This Laboratory Grown Diamond was created by High Pressure High Temperature (HPHT) growth process.
 Type II



Sample Image Used



March 6, 2026
 IGI Report Number **LG772614894**
EMERALD CUT
LABORATORY GROWN DIAMOND
5.06 X 3.06 X 2.25 MM
 Carat Weight **0.34 CARAT**
 Color Grade **G**
 Clarity Grade **I.F.**
 Polish **VERY GOOD**
 Symmetry **EXCELLENT**
 Fluorescence **NONE**
 Inscription(s) **IGI LG772614894**

Comments: As Grown - No indication of post-growth treatment. This Laboratory Grown Diamond was created by High Pressure High Temperature (HPHT) growth process. Type II



March 6, 2026
 IGI Report Number **LG772614894**
EMERALD CUT
LABORATORY GROWN DIAMOND
5.06 X 3.06 X 2.25 MM
 Carat Weight **0.34 CARAT**
 Color Grade **G**
 Clarity Grade **I.F.**
 Polish **VERY GOOD**
 Symmetry **EXCELLENT**
 Fluorescence **NONE**
 Inscription(s) **IGI LG772614894**

Comments: As Grown - No indication of post-growth treatment. This Laboratory Grown Diamond was created by High Pressure High Temperature (HPHT) growth process. Type II



THIS DOCUMENT WAS PRODUCED WITH THE FOLLOWING SECURITY MEASURES: SPECIAL DOCUMENT PAPER, INK SCREENS, WATERMARK, BACKGROUND DESIGNS, HOLOGRAM AND OTHER SECURITY FEATURES NOT LISTED AND DO EXCEED DOCUMENT SECURITY INDUSTRY GUIDELINES.