



ELECTRONIC COPY

LG772619876
Report verification at igi.org



February 17, 2026

IGI Report Number **LG772619876**

Description **LABORATORY GROWN DIAMOND**

Shape and Cutting Style **ROUND BRILLIANT**

Measurements **8.43 - 8.50 X 5.20 MM**

GRADING RESULTS

Carat Weight **2.30 CARATS**

Color Grade **E**

Clarity Grade **VS 1**

Cut Grade **IDEAL**

February 17, 2026

IGI Report Number **LG772619876**

Description **LABORATORY GROWN DIAMOND**

Shape and Cutting Style **ROUND BRILLIANT**

Measurements **8.43 - 8.50 X 5.20 MM**

GRADING RESULTS

Carat Weight **2.30 CARATS**

Color Grade **E**

Clarity Grade **VS 1**

Cut Grade **IDEAL**

ADDITIONAL GRADING INFORMATION

Polish **EXCELLENT**

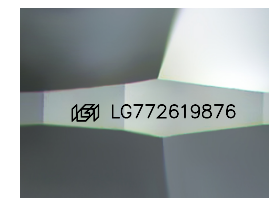
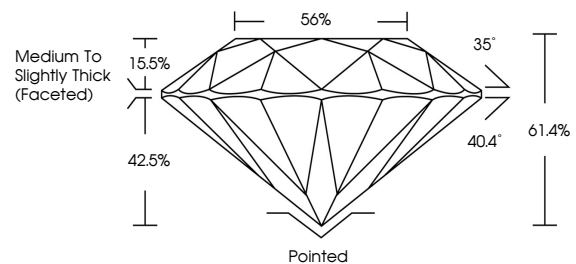
Symmetry **EXCELLENT**

Fluorescence **NONE**

Inscription(s) **IGI LG772619876**

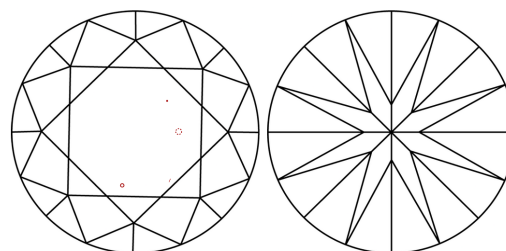
Comments: This Laboratory Grown Diamond was created by Chemical Vapor Deposition (CVD) growth process. Type IIa

PROPORTIONS



Sample Image Used

CLARITY CHARACTERISTICS



KEY TO SYMBOLS

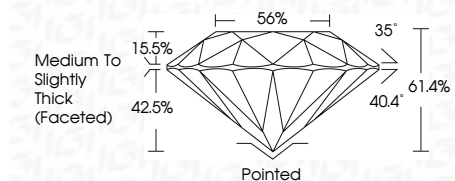
Red symbols indicate internal characteristics.
Green symbols indicate external characteristics.

COLOR

D E F G H I J Faint Very Light Light

CLARITY

| FL | IF | VS ¹⁻² | VS ¹⁻² | SI ¹⁻² | I ¹⁻³ |
|----------|---------------------|-----------------------------|------------------------|-------------------|------------------|
| Flawless | Internally Flawless | Very Very Slightly Included | Very Slightly Included | Slightly Included | Included |



ADDITIONAL GRADING INFORMATION

Polish **EXCELLENT**

Symmetry **EXCELLENT**

Fluorescence **NONE**

Inscription(s) **IGI LG772619876**

Comments: This Laboratory Grown Diamond was created by Chemical Vapor Deposition (CVD) growth process. Type IIa



IGI



| | | | | | | | | | | | | |
|-------------------|---------------------------|-------------|-----------|-------|-------|--------|------------------------------------|---------|-----------|--------------|----------------|---|
| February 17, 2026 | IGI Report No LG772619876 | 2.30 CARATS | E | VS 1 | IDEAL | 56% | Medium To Slightly Thick (Faceted) | Pointed | EXCELLENT | EXCELLENT | NONE | IGI LG772619876 |
| ROUND BRILLIANT | 8.43 - 8.50 X 5.20 MM | Color Grade | Cut Grade | Depth | Table | Girdle | Culet | Polish | Symmetry | Fluorescence | Inscription(s) | Comments: This Laboratory Grown Diamond was created by Chemical Vapor Deposition (CVD) growth process. Type IIa |