



ELECTRONIC COPY

LG772626419
Report verification at igi.org



February 21, 2026

IGI Report Number **LG772626419**

Description **LABORATORY GROWN DIAMOND**

Shape and Cutting Style **CUT CORNERED
RECTANGULAR MODIFIED
BRILLIANT**

Measurements **10.41 X 7.20 X 4.96 MM**

GRADING RESULTS

Carat Weight **3.55 CARATS**

Color Grade **FANCY INTENSE YELLOW**

Clarity Grade **VVS 1**

LABORATORY GROWN DIAMOND REPORT

February 21, 2026

IGI Report Number **LG772626419**

Description **LABORATORY GROWN DIAMOND**

Shape and Cutting Style **CUT CORNERED RECTANGULAR
MODIFIED BRILLIANT**

Measurements **10.41 X 7.20 X 4.96 MM**

GRADING RESULTS

Carat Weight **3.55 CARATS**

Color Grade **FANCY INTENSE YELLOW**

Clarity Grade **VVS 1**

ADDITIONAL GRADING INFORMATION

Polish **EXCELLENT**

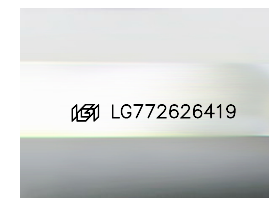
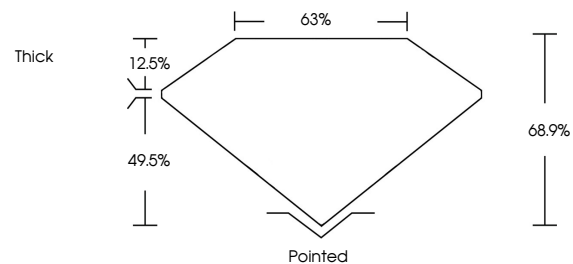
Symmetry **EXCELLENT**

Fluorescence **NONE**

Inscription(s) **IGI LG772626419**

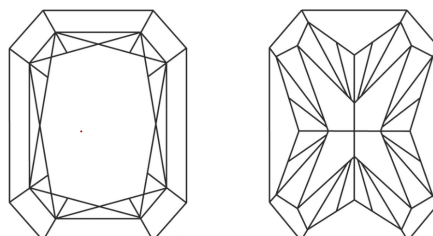
Comments: This Laboratory Grown Diamond was created by Chemical Vapor Deposition (CVD) growth process.

PROPORTIONS



Sample Image Used

CLARITY CHARACTERISTICS



KEY TO SYMBOLS

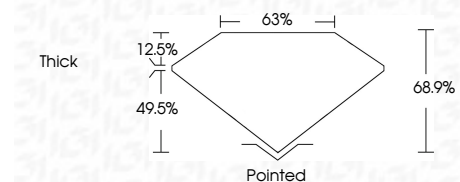
Red symbols indicate internal characteristics.
Green symbols indicate external characteristics.

COLOR

D E F G H I J Faint Very Light Light

CLARITY

| FL | IF | VVS ¹⁻² | VS ¹⁻² | SI ¹⁻² | I ¹⁻³ |
|----------|---------------------|-----------------------------|------------------------|-------------------|------------------|
| Flawless | Internally Flawless | Very Very Slightly Included | Very Slightly Included | Slightly Included | Included |



ADDITIONAL GRADING INFORMATION

Polish **EXCELLENT**

Symmetry **EXCELLENT**

Fluorescence **NONE**

Inscription(s) **IGI LG772626419**

Comments: This Laboratory Grown Diamond was created by Chemical Vapor Deposition (CVD) growth process.



IGI



February 21, 2026
IGI Report No LG772626419
CUT CORNERED RECT. MODIFIED BRILLIANT
10.41 X 7.20 X 4.96 MM
3.55 CARATS
FANCY INTENSE YELLOW
VVS 1
68.9%
63%
Thick
Pointed
EXCELLENT
EXCELLENT
NONE
IGI LG772626419

Comments: This Laboratory Grown Diamond was created by Chemical Vapor Deposition (CVD) growth process.