



ELECTRONIC COPY

LG772666954
Report verification at igi.org



March 9, 2026

IGI Report Number **LG772666954**

Description **LABORATORY GROWN DIAMOND**

Shape and Cutting Style **ROUND BRILLIANT**

Measurements **6.46 - 6.51 X 3.99 MM**

GRADING RESULTS

Carat Weight **1.03 CARAT**

Color Grade **F**

Clarity Grade **VVS 2**

Cut Grade **IDEAL**

March 9, 2026
IGI Report Number **LG772666954**
Description **LABORATORY GROWN DIAMOND**
Shape and Cutting Style **ROUND BRILLIANT**
Measurements **6.46 - 6.51 X 3.99 MM**

GRADING RESULTS

Carat Weight **1.03 CARAT**

Color Grade **F**

Clarity Grade **VVS 2**

Cut Grade **IDEAL**

ADDITIONAL GRADING INFORMATION

Polish **EXCELLENT**

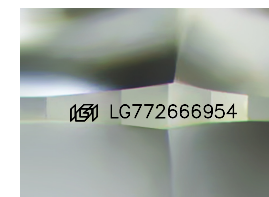
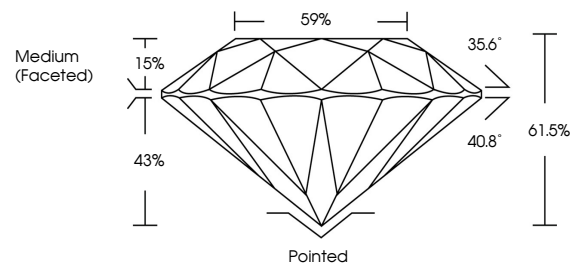
Symmetry **EXCELLENT**

Fluorescence **NONE**

Inscription(s) **IGI LG772666954**

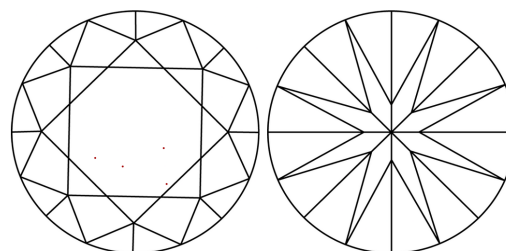
Comments: This Laboratory Grown Diamond was created by Chemical Vapor Deposition (CVD) growth process.
Type IIa

PROPORTIONS



Sample Image Used

CLARITY CHARACTERISTICS



KEY TO SYMBOLS

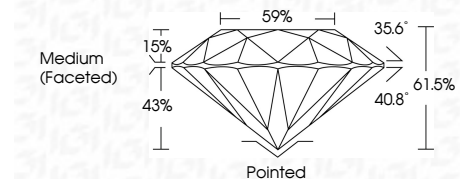
Red symbols indicate internal characteristics.
Green symbols indicate external characteristics.

COLOR

D E F G H I J Faint Very Light Light

CLARITY

FL	IF	VVS ¹⁻²	VS ¹⁻²	SI ¹⁻²	I ¹⁻³
Flawless	Internally Flawless	Very Very Slightly Included	Very Slightly Included	Slightly Included	Included



ADDITIONAL GRADING INFORMATION

Polish **EXCELLENT**

Symmetry **EXCELLENT**

Fluorescence **NONE**

Inscription(s) **IGI LG772666954**

Comments: This Laboratory Grown Diamond was created by Chemical Vapor Deposition (CVD) growth process.
Type IIa



IGI



March 9, 2026	IGI Report No LG772666954	1.03 CARAT	F	Pointed	EXCELLENT	EXCELLENT	NONE	IGI LG772666954
ROUND BRILLIANT	6.46 - 6.51 X 3.99 MM	Color Grade	VVS 2	Symmetry	IDEAL	EXCELLENT	NONE	IGI LG772666954
		Clarity Grade	61.05%	Fluorescence	59%	EXCELLENT	NONE	IGI LG772666954
		Cut Grade	Medium (Faceted)	Inscription(s)		EXCELLENT	NONE	IGI LG772666954
				Comments: This Laboratory Grown Diamond was created by Chemical Vapor Deposition (CVD) growth process.				
				Type IIa				