



**ELECTRONIC COPY**

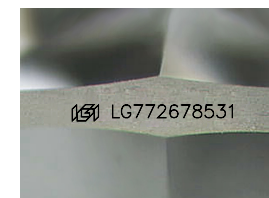
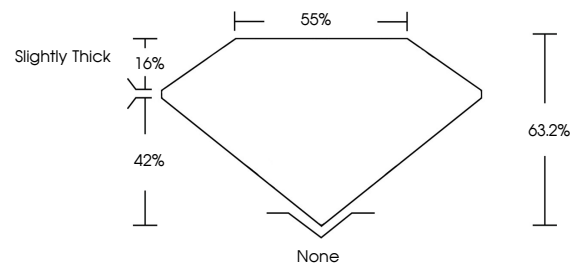
LG772678531  
Report verification at igi.org



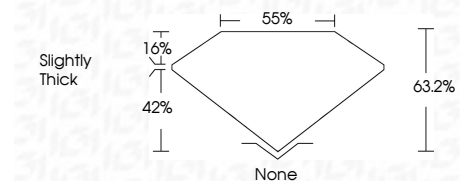
February 11, 2026  
IGI Report Number **LG772678531**  
Description **LABORATORY GROWN DIAMOND**  
Shape and Cutting Style **MODIFIED NONAGON STEP CUT**  
Measurements **15.00 X 8.58 X 5.42 MM**  
**GRADING RESULTS**  
Carat Weight **5.03 CARATS**  
Color Grade **D**  
Clarity Grade **VVS 1**

February 11, 2026  
IGI Report Number **LG772678531**  
Description **LABORATORY GROWN DIAMOND**  
Shape and Cutting Style **MODIFIED NONAGON STEP CUT**  
Measurements **15.00 X 8.58 X 5.42 MM**

**PROPORTIONS**



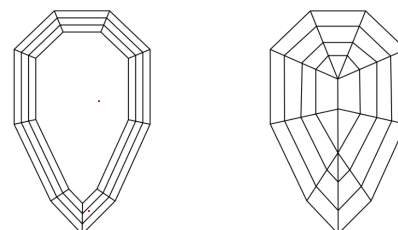
Sample Image Used



**GRADING RESULTS**

Carat Weight **5.03 CARATS**  
Color Grade **D**  
Clarity Grade **VVS 1**

**CLARITY CHARACTERISTICS**



**KEY TO SYMBOLS**

Red symbols indicate internal characteristics.  
Green symbols indicate external characteristics.

**ADDITIONAL GRADING INFORMATION**

Polish **EXCELLENT**  
Symmetry **EXCELLENT**  
Fluorescence **NONE**  
Inscription(s) **IGI LG772678531**

Comments: This Laboratory Grown Diamond was created by Chemical Vapor Deposition (CVD) growth process.  
Type IIa

**COLOR**

D E F G H I J Faint Very Light Light

**CLARITY**

FL	IF	VVS <sup>1-2</sup>	VS <sup>1-2</sup>	SI <sup>1-2</sup>	I <sup>1-3</sup>
Flawless	Internally Flawless	Very Very Slightly Included	Very Slightly Included	Slightly Included	Included

**ADDITIONAL GRADING INFORMATION**

Polish **EXCELLENT**  
Symmetry **EXCELLENT**  
Fluorescence **NONE**  
Inscription(s) **IGI LG772678531**  
Comments: This Laboratory Grown Diamond was created by Chemical Vapor Deposition (CVD) growth process.  
Type IIa



February 11, 2026  
IGI Report No LG772678531  
MODIFIED NONAGON STEP CUT  
5.03 CARATS  
D  
5.03 CARATS  
D  
VVS 1  
63.2%  
65%  
Slightly Thick  
None  
EXCELLENT  
EXCELLENT  
NONE  
IGI LG772678531  
Comments: This Laboratory Grown Diamond was created by Chemical Vapor Deposition (CVD) growth process.  
Type IIa