



**INTERNATIONAL
GEMOLOGICAL
INSTITUTE**

ELECTRONIC COPY



February 5, 2026

IGI Report Number **LG772683017**

**ROUND BRILLIANT
LABORATORY GROWN DIAMOND
4.43 - 4.46 X 2.77 MM**

| | |
|----------------|------------------------|
| Carat Weight | 0.34 CARAT |
| Color Grade | D |
| Clarity Grade | VVS 2 |
| Cut Grade | EXCELLENT |
| Polish | EXCELLENT |
| Symmetry | EXCELLENT |
| Fluorescence | NONE |
| Inscription(s) | IGI LG772683017 |

Comments: This Laboratory Grown Diamond was created by Chemical Vapor Deposition (CVD) growth process. Type IIa

LABORATORY GROWN DIAMOND REPORT

February 5, 2026

IGI Report Number

LG772683017

Description

LABORATORY GROWN DIAMOND

Shape and Cutting Style

ROUND BRILLIANT

Measurements

4.43 - 4.46 X 2.77 MM

GRADING RESULTS

Carat Weight

0.34 CARAT

Color Grade

D

Clarity Grade

VVS 2

Cut Grade

EXCELLENT

ADDITIONAL GRADING INFORMATION

Polish

EXCELLENT

Symmetry

EXCELLENT

Fluorescence

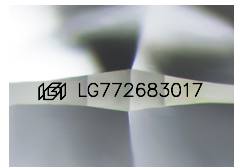
NONE

Inscription(s)

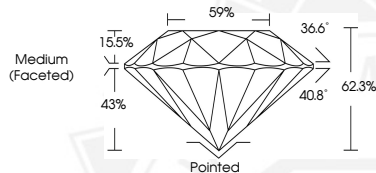
IGI LG772683017

Comments: This Laboratory Grown Diamond was created by Chemical Vapor Deposition (CVD) growth process.

Type IIa



Sample Image Used



February 5, 2026

IGI Report Number **LG772683017**

**ROUND BRILLIANT
LABORATORY GROWN DIAMOND
4.43 - 4.46 X 2.77 MM**

| | |
|----------------|------------------------|
| Carat Weight | 0.34 CARAT |
| Color Grade | D |
| Clarity Grade | VVS 2 |
| Cut Grade | EXCELLENT |
| Polish | EXCELLENT |
| Symmetry | EXCELLENT |
| Fluorescence | NONE |
| Inscription(s) | IGI LG772683017 |

Comments: This Laboratory Grown Diamond was created by Chemical Vapor Deposition (CVD) growth process. Type IIa



THIS DOCUMENT WAS PRODUCED WITH THE FOLLOWING SECURITY MEASURES: SPECIAL DOCUMENT PAPER, INK SCREENS, WATERMARK, BACKGROUND DESIGNS, HOLOGRAM AND OTHER SECURITY FEATURES NOT LISTED AND DO EXCEED DOCUMENT SECURITY INDUSTRY GUIDELINES.

For terms & conditions and to verify this report, please visit www.igi.org