



ELECTRONIC COPY

LABORATORY GROWN DIAMOND REPORT

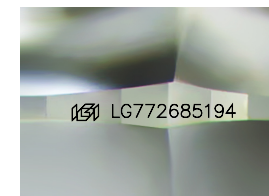
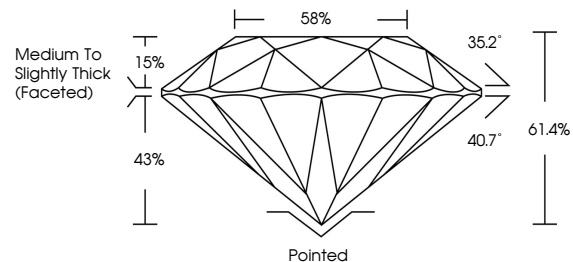
February 10, 2026
 IGI Report Number **LG772685194**
 Description **LABORATORY GROWN DIAMOND**
 Shape and Cutting Style **ROUND BRILLIANT**
 Measurements **7.33 - 7.38 X 4.51 MM**
GRADING RESULTS
 Carat Weight **1.51 CARAT**
 Color Grade **D**
 Clarity Grade **VS 1**
 Cut Grade **IDEAL**

ADDITIONAL GRADING INFORMATION

Polish **EXCELLENT**
 Symmetry **EXCELLENT**
 Fluorescence **NONE**
 Inscription(s) **IGI LG772685194**

Comments: This Laboratory Grown Diamond was created by Chemical Vapor Deposition (CVD) growth process. Type IIa

PROPORTIONS



Sample Image Used

COLOR

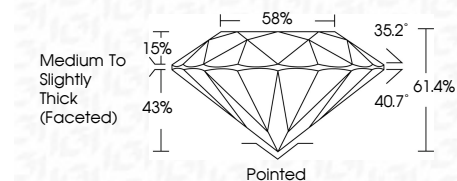
D E F G H I J Faint Very Light Light

CLARITY

| FL | IF | VS ¹⁻² | VS ¹⁻² | SI ¹⁻² | I ¹⁻³ |
|----------|---------------------|-----------------------------|------------------------|-------------------|------------------|
| Flawless | Internally Flawless | Very Very Slightly Included | Very Slightly Included | Slightly Included | Included |



February 10, 2026
 IGI Report Number **LG772685194**
 Description **LABORATORY GROWN DIAMOND**
 Shape and Cutting Style **ROUND BRILLIANT**
 Measurements **7.33 - 7.38 X 4.51 MM**
GRADING RESULTS
 Carat Weight **1.51 CARAT**
 Color Grade **D**
 Clarity Grade **VS 1**
 Cut Grade **IDEAL**



ADDITIONAL GRADING INFORMATION

Polish **EXCELLENT**
 Symmetry **EXCELLENT**
 Fluorescence **NONE**
 Inscription(s) **IGI LG772685194**
 Comments: This Laboratory Grown Diamond was created by Chemical Vapor Deposition (CVD) growth process. Type IIa



February 10, 2026
 IGI Report No LG772685194
ROUND BRILLIANT
 7.33 - 7.38 X 4.51 MM
 1.51 CARAT
 D
 VS 1
 IDEAL
 61.4%
 58%
 Medium To Slightly Thick (Faceted)
 Pointed
 EXCELLENT
 EXCELLENT
 NONE
 IGI LG772685194
 Comments: This Laboratory Grown Diamond was created by Chemical Vapor Deposition (CVD) growth process. Type IIa