



**LABORATORY GROWN DIAMOND REPORT**

February 8, 2026  
 IGI Report Number **LG772689207**  
 Description **LABORATORY GROWN DIAMOND**  
 Shape and Cutting Style **OVAL BRILLIANT**  
 Measurements **7.72 X 5.41 X 3.30 MM**

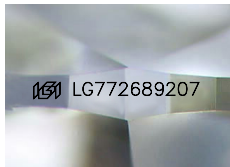
**GRADING RESULTS**

Carat Weight **0.86 CARAT**  
 Color Grade **E**  
 Clarity Grade **VVS 1**

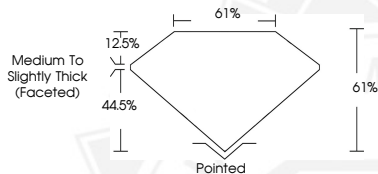
**ADDITIONAL GRADING INFORMATION**

Polish **EXCELLENT**  
 Symmetry **EXCELLENT**  
 Fluorescence **NONE**  
 Inscription(s) **IGI LG772689207**

Comments: As Grown - No indication of post-growth treatment.  
 This Laboratory Grown Diamond was created by High Pressure High Temperature (HPHT) growth process.  
 Type II



Sample Image Used



February 8, 2026  
 IGI Report Number **LG772689207**  
 OVAL BRILLIANT  
 LABORATORY GROWN DIAMOND  
 7.72 X 5.41 X 3.30 MM  
 Carat Weight **0.86 CARAT**  
 Color Grade **E**  
 Clarity Grade **VVS 1**  
 Polish **EXCELLENT**  
 Symmetry **EXCELLENT**  
 Fluorescence **NONE**  
 Inscription(s) **IGI LG772689207**

Comments: As Grown - No indication of post-growth treatment. This Laboratory Grown Diamond was created by High Pressure High Temperature (HPHT) growth process. Type II



February 8, 2026  
 IGI Report Number **LG772689207**  
 OVAL BRILLIANT  
 LABORATORY GROWN DIAMOND  
 7.72 X 5.41 X 3.30 MM  
 Carat Weight **0.86 CARAT**  
 Color Grade **E**  
 Clarity Grade **VVS 1**  
 Polish **EXCELLENT**  
 Symmetry **EXCELLENT**  
 Fluorescence **NONE**  
 Inscription(s) **IGI LG772689207**

Comments: As Grown - No indication of post-growth treatment. This Laboratory Grown Diamond was created by High Pressure High Temperature (HPHT) growth process. Type II



THIS DOCUMENT WAS PRODUCED WITH THE FOLLOWING SECURITY MEASURES: SPECIAL DOCUMENT PAPER, INK SCREENS, WATERMARK, BACKGROUND DESIGNS, HOLOGRAM AND OTHER SECURITY FEATURES NOT LISTED AND DO EXCEED DOCUMENT SECURITY INDUSTRY GUIDELINES.