



ELECTRONIC COPY

LG772690490
Report verification at igi.org



February 4, 2026

IGI Report Number **LG772690490**

Description **LABORATORY GROWN DIAMOND**

Shape and Cutting Style **ROUND BRILLIANT**

Measurements **8.35 - 8.42 X 5.22 MM**

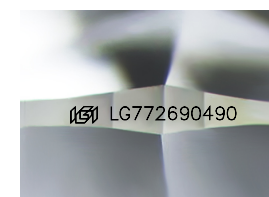
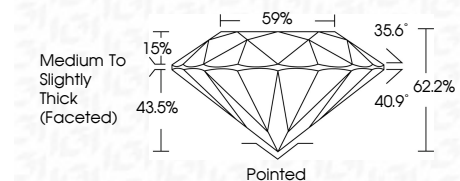
GRADING RESULTS

Carat Weight **2.29 CARATS**

Color Grade **D**

Clarity Grade **VVS 1**

Cut Grade **IDEAL**



Sample Image Used

ADDITIONAL GRADING INFORMATION

Polish **EXCELLENT**

Symmetry **EXCELLENT**

Fluorescence **NONE**

Inscription(s) **IGI LG772690490**

Comments: As Grown - No indication of post-growth treatment.

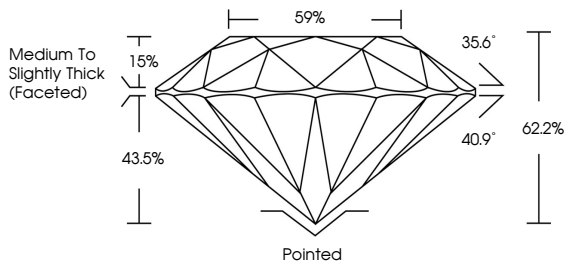
This Laboratory Grown Diamond was created by High Pressure High Temperature (HPHT) growth process. Type II



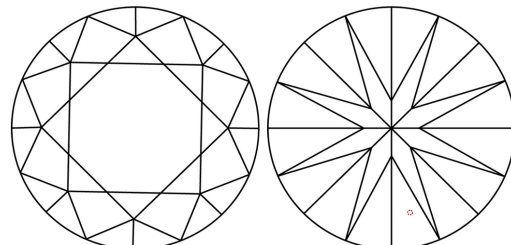
IGI

February 4, 2026	IGI Report No LG772690490	2.29 CARATS	D
ROUND BRILLIANT	8.35 - 8.42 X 5.22 MM	VVS 1	IDEAL
Carat Weight	Color Grade	Depth	62.2%
Clarity Grade	Cut Grade	Table	15%
Depth	Grade	Medium To Slightly Thick (Faceted)	Pointed
Table	Culet	Polish	EXCELLENT
Grade	Symmetry	Symmetry	EXCELLENT
Culet	Fluorescence	Fluorescence	NONE
Polish	Inscription(s)	Inscription(s)	IGI LG772690490
Symmetry	Comments:	Comments:	As Grown - No indication of post-growth treatment. This Laboratory Grown Diamond was created by High Pressure High Temperature (HPHT) growth process. Type II
Fluorescence			
Inscription(s)			

PROPORTIONS



CLARITY CHARACTERISTICS



KEY TO SYMBOLS

Red symbols indicate internal characteristics.
Green symbols indicate external characteristics.

COLOR

D	E	F	G	H	I	J	Faint	Very Light	Light
---	---	---	---	---	---	---	-------	------------	-------

CLARITY

FL	IF	VVS ¹⁻²	VS ¹⁻²	SI ¹⁻²	I ¹⁻³
Flawless	Internally Flawless	Very Very Slightly Included	Very Slightly Included	Slightly Included	Included

