



# INTERNATIONAL GEMOLOGICAL INSTITUTE

## LABORATORY GROWN DIAMOND REPORT

February 7, 2026  
IGI Report Number **LG772696956**  
Description **LABORATORY GROWN DIAMOND**  
Shape and Cutting Style **RECTANGULAR PRINCESS CUT**  
Measurements **3.71 X 3.50 X 2.54 MM**

### GRADING RESULTS

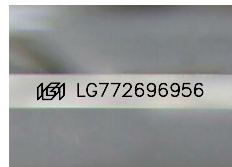
Carat Weight **0.29 CARAT**  
Color Grade **D**  
Clarity Grade **INTERNALLY FLAWLESS**

### ADDITIONAL GRADING INFORMATION

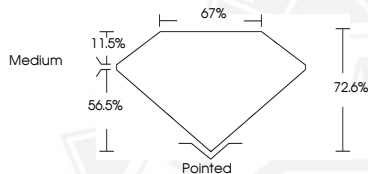
Polish **EXCELLENT**  
Symmetry **EXCELLENT**  
Fluorescence **NONE**  
Inscription(s) **IGI LG772696956**

Comments: This Laboratory Grown Diamond was created by  
Chemical Vapor Deposition (CVD) growth process.  
Type IIa

ELECTRONIC COPY



Sample Image Used



February 7, 2026

IGI Report Number **LG772696956**  
**RECTANGULAR PRINCESS CUT**  
**LABORATORY GROWN DIAMOND**  
**3.71 X 3.50 X 2.54 MM**

Carat Weight **0.29 CARAT**  
Color Grade **D**  
Clarity Grade **I.F.**  
Polish **EXCELLENT**  
Symmetry **EXCELLENT**  
Fluorescence **NONE**  
Inscription(s) **IGI LG772696956**

Comments: This Laboratory Grown  
Diamond was created by  
Chemical Vapor Deposition (CVD)  
growth process. Type IIa



February 7, 2026

IGI Report Number **LG772696956**  
**RECTANGULAR PRINCESS CUT**  
**LABORATORY GROWN DIAMOND**  
**3.71 X 3.50 X 2.54 MM**

Carat Weight **0.29 CARAT**  
Color Grade **D**  
Clarity Grade **I.F.**  
Polish **EXCELLENT**  
Symmetry **EXCELLENT**  
Fluorescence **NONE**  
Inscription(s) **IGI LG772696956**

Comments: This Laboratory Grown  
Diamond was created by  
Chemical Vapor Deposition (CVD)  
growth process. Type IIa



THIS DOCUMENT WAS PRODUCED WITH THE FOLLOWING SECURITY MEASURES: SPECIAL DOCUMENT PAPER, INK SCREENS, WATERMARK, BACKGROUND DESIGNS, HOLOGRAM AND OTHER SECURITY FEATURES NOT LISTED AND DO EXCEED DOCUMENT SECURITY INDUSTRY GUIDELINES.

For terms & conditions and to verify this report, please visit [www.igi.org](http://www.igi.org)