



ELECTRONIC COPY

LABORATORY GROWN DIAMOND REPORT

February 16, 2026
IGI Report Number LG772698489
Description LABORATORY GROWN DIAMOND
Shape and Cutting Style RECTANGULAR CUSHION MIXED CUT
Measurements 11.19 X 7.17 X 5.00 MM

GRADING RESULTS

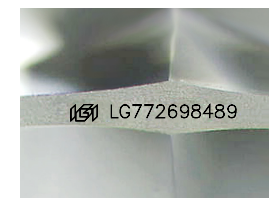
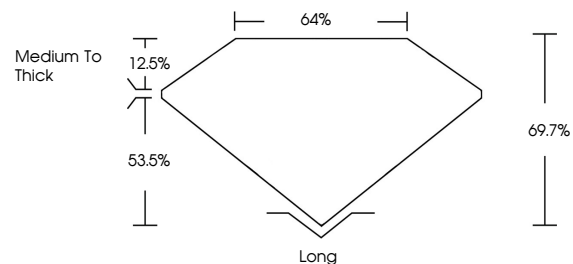
Carat Weight 3.91 CARATS
Color Grade FANCY VIVID GREEN
Clarity Grade VVS 2

ADDITIONAL GRADING INFORMATION

Polish EXCELLENT
Symmetry EXCELLENT
Fluorescence NONE
Inscription(s) IGI LG772698489

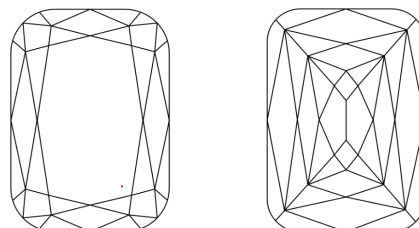
Comments: This Laboratory Grown Diamond was created by Chemical Vapor Deposition (CVD) growth process. Indications of post-growth treatment.

PROPORTIONS



Sample Image Used

CLARITY CHARACTERISTICS



KEY TO SYMBOLS

Red symbols indicate internal characteristics.
Green symbols indicate external characteristics.

COLOR

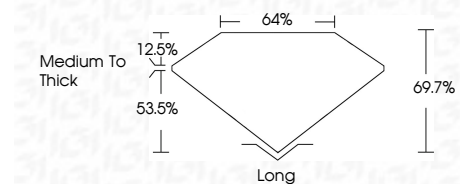
D E F G H I J Faint Very Light Light

CLARITY

FL IF VVS¹⁻² VS¹⁻² SI¹⁻² I¹⁻³
Flawless Internally Flawless Very Very Slightly Included Very Slightly Included Slightly Included Included



February 16, 2026
IGI Report Number LG772698489
Description LABORATORY GROWN DIAMOND
Shape and Cutting Style RECTANGULAR CUSHION MIXED CUT
Measurements 11.19 X 7.17 X 5.00 MM
GRADING RESULTS
Carat Weight 3.91 CARATS
Color Grade FANCY VIVID GREEN
Clarity Grade VVS 2



ADDITIONAL GRADING INFORMATION

Polish EXCELLENT
Symmetry EXCELLENT
Fluorescence NONE
Inscription(s) IGI LG772698489
Comments: This Laboratory Grown Diamond was created by Chemical Vapor Deposition (CVD) growth process. Indications of post-growth treatment.



February 16, 2026
IGI Report No LG772698489
RECTANGULAR CUSHION MIXED CUT
11.19 X 7.17 X 5.00 MM
3.91 CARATS
FANCY VIVID GREEN
VVS 2
69.7%
64%
Medium to Thick
Long
EXCELLENT
EXCELLENT
NONE
IGI LG772698489
Comments: This Laboratory Grown Diamond was created by Chemical Vapor Deposition (CVD) growth process. Indications of post-growth treatment.