



ELECTRONIC COPY

LG773614344
Report verification at igi.org



February 10, 2026

IGI Report Number **LG773614344**

Description **LABORATORY GROWN DIAMOND**

Shape and Cutting Style **ROUND BRILLIANT**

Measurements **7.40 - 7.45 X 4.64 MM**

GRADING RESULTS

Carat Weight **1.60 CARAT**

Color Grade **D**

Clarity Grade **VS 1**

Cut Grade **EXCELLENT**

February 10, 2026

IGI Report Number **LG773614344**

Description **LABORATORY GROWN DIAMOND**

Shape and Cutting Style **ROUND BRILLIANT**

Measurements **7.40 - 7.45 X 4.64 MM**

GRADING RESULTS

Carat Weight **1.60 CARAT**

Color Grade **D**

Clarity Grade **VS 1**

Cut Grade **EXCELLENT**

ADDITIONAL GRADING INFORMATION

Polish **EXCELLENT**

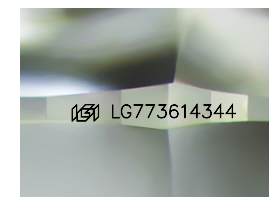
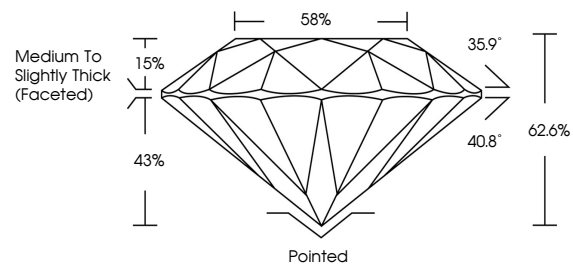
Symmetry **EXCELLENT**

Fluorescence **NONE**

Inscription(s) **IGI LG773614344**

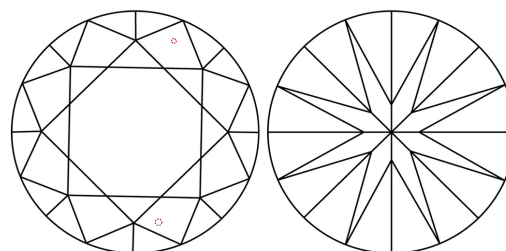
Comments: This Laboratory Grown Diamond was created by Chemical Vapor Deposition (CVD) growth process.
Type IIa

PROPORTIONS



Sample Image Used

CLARITY CHARACTERISTICS



KEY TO SYMBOLS

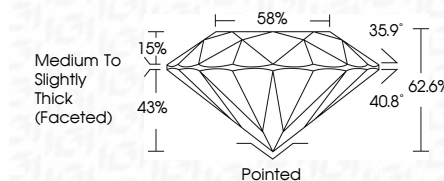
Red symbols indicate internal characteristics.
Green symbols indicate external characteristics.

COLOR

D E F G H I J Faint Very Light Light

CLARITY

FL	IF	VS ¹⁻²	VS ¹⁻²	SI ¹⁻²	I ¹⁻³
Flawless	Internally Flawless	Very Very Slightly Included	Very Slightly Included	Slightly Included	Included



ADDITIONAL GRADING INFORMATION

Polish **EXCELLENT**

Symmetry **EXCELLENT**

Fluorescence **NONE**

Inscription(s) **IGI LG773614344**

Comments: This Laboratory Grown Diamond was created by Chemical Vapor Deposition (CVD) growth process.
Type IIa



IGI



February 10, 2026	IGI Report No LG773614344	1.60 CARAT	D	VS 1	EXCELLENT	EXCELLENT	EXCELLENT	EXCELLENT	IGI LG773614344
ROUND BRILLIANT	7.40 - 7.45 X 4.64 MM	Color Grade	Depth	Table	Grille	Culet	Polish	Symmetry	Fluorescence
		Medium To Slightly Thick (Faceted)	Pointed	EXCELLENT	EXCELLENT	NONE	EXCELLENT	EXCELLENT	NONE

Comments: This Laboratory Grown Diamond was created by Chemical Vapor Deposition (CVD) growth process.
Type IIa