



ELECTRONIC COPY

LG773618443
Report verification at igi.org



February 6, 2026

IGI Report Number **LG773618443**

Description **LABORATORY GROWN DIAMOND**

Shape and Cutting Style **ROUND BRILLIANT**

Measurements **8.32 - 8.38 X 5.20 MM**

GRADING RESULTS

Carat Weight **2.25 CARATS**

Color Grade **E**

Clarity Grade **VVS 2**

Cut Grade **IDEAL**

February 6, 2026
IGI Report Number **LG773618443**
Description **LABORATORY GROWN DIAMOND**
Shape and Cutting Style **ROUND BRILLIANT**
Measurements **8.32 - 8.38 X 5.20 MM**

GRADING RESULTS

Carat Weight **2.25 CARATS**

Color Grade **E**

Clarity Grade **VVS 2**

Cut Grade **IDEAL**

ADDITIONAL GRADING INFORMATION

Polish **EXCELLENT**

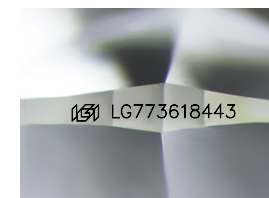
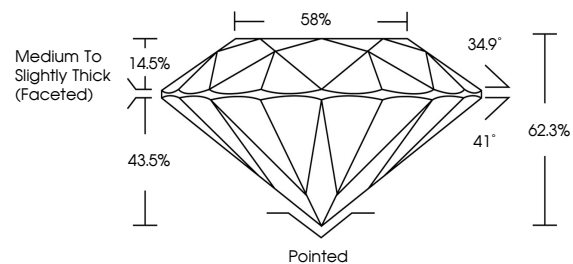
Symmetry **EXCELLENT**

Fluorescence **NONE**

Inscription(s) **LG773618443**

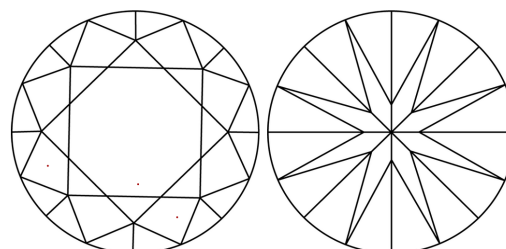
Comments: This Laboratory Grown Diamond was created by Chemical Vapor Deposition (CVD) growth process.
Type IIa

PROPORTIONS



Sample Image Used

CLARITY CHARACTERISTICS



KEY TO SYMBOLS

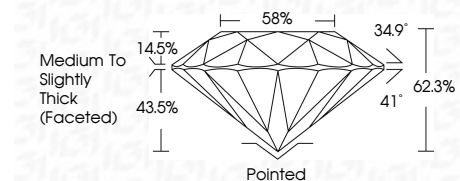
Red symbols indicate internal characteristics.
Green symbols indicate external characteristics.

COLOR

D E F G H I J Faint Very Light Light

CLARITY

FL	IF	VVS ¹⁻²	VS ¹⁻²	SI ¹⁻²	I ¹⁻³
Flawless	Internally Flawless	Very Very Slightly Included	Very Slightly Included	Slightly Included	Included



ADDITIONAL GRADING INFORMATION

Polish **EXCELLENT**

Symmetry **EXCELLENT**

Fluorescence **NONE**

Inscription(s) **LG773618443**

Comments: This Laboratory Grown Diamond was created by Chemical Vapor Deposition (CVD) growth process.
Type IIa



IGI



February 6, 2026	IGI Report No LG773618443	2.25 CARATS	E	Pointed	EXCELLENT	EXCELLENT	NONE	LG773618443
8.32 - 8.38 X 5.20 MM	ROUND BRILLIANT	Carat Weight	VVS 2	Depth	IDEAL	62.3%	Medium To Slightly Thick (Faceted)	Comments: This Laboratory Grown Diamond was created by Chemical Vapor Deposition (CVD) growth process. Type IIa
		Color Grade	IDEAL	Table	88%			
		Clarity Grade	VVS 2	Grade				
		Cut Grade	IDEAL	Culet				
				Polish				
				Symmetry				
				Fluorescence				
				Inscription(s)				