



ELECTRONIC COPY

LG773631003
Report verification at igi.org



February 12, 2026
IGI Report Number **LG773631003**
Description **LABORATORY GROWN DIAMOND**
Shape and Cutting Style **MODIFIED NONAGON STEP CUT**
Measurements **10.13 X 6.05 X 3.54 MM**
GRADING RESULTS
Carat Weight **1.55 CARAT**
Color Grade **E**
Clarity Grade **VVS 2**

February 12, 2026
IGI Report Number **LG773631003**
Description **LABORATORY GROWN DIAMOND**
Shape and Cutting Style **MODIFIED NONAGON STEP CUT**
Measurements **10.13 X 6.05 X 3.54 MM**

GRADING RESULTS

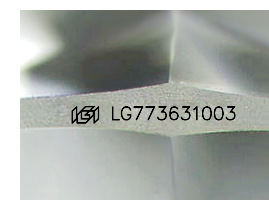
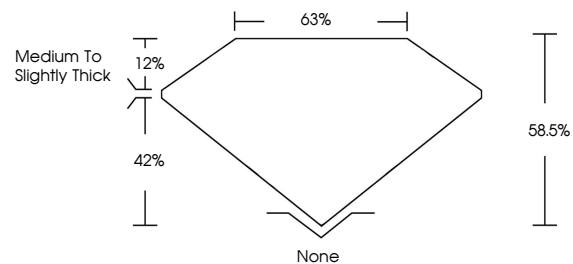
Carat Weight **1.55 CARAT**
Color Grade **E**
Clarity Grade **VVS 2**

ADDITIONAL GRADING INFORMATION

Polish **EXCELLENT**
Symmetry **EXCELLENT**
Fluorescence **NONE**
Inscription(s) **IGI LG773631003**

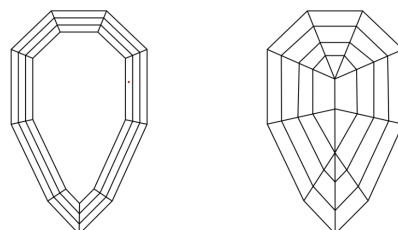
Comments: This Laboratory Grown Diamond was created by Chemical Vapor Deposition (CVD) growth process. Type IIa

PROPORTIONS



Sample Image Used

CLARITY CHARACTERISTICS



KEY TO SYMBOLS

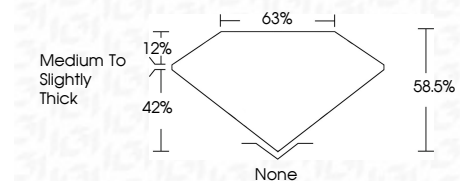
Red symbols indicate internal characteristics.
Green symbols indicate external characteristics.

COLOR

D E F G H I J Faint Very Light Light

CLARITY

FL	IF	VVS ¹⁻²	VS ¹⁻²	SI ¹⁻²	I ¹⁻³
Flawless	Internally Flawless	Very Very Slightly Included	Very Slightly Included	Slightly Included	Included



ADDITIONAL GRADING INFORMATION

Polish **EXCELLENT**
Symmetry **EXCELLENT**
Fluorescence **NONE**
Inscription(s) **IGI LG773631003**
Comments: This Laboratory Grown Diamond was created by Chemical Vapor Deposition (CVD) growth process. Type IIa



February 12, 2026
IGI Report No LG773631003
MODIFIED NONAGON STEP CUT
10.13 X 6.05 X 3.54 MM
1.55 CARAT
E
VVS 2
58.5%
63%
Medium to Slightly Thick
None
None
EXCELLENT
EXCELLENT
NONE
IGI LG773631003
Comments: This Laboratory Grown Diamond was created by Chemical Vapor Deposition (CVD) growth process. Type IIa