



ELECTRONIC COPY

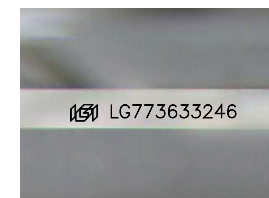
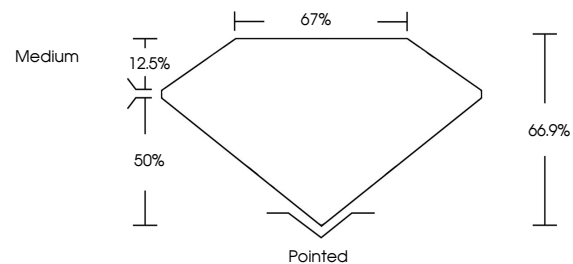
LG773633246
Report verification at igi.org



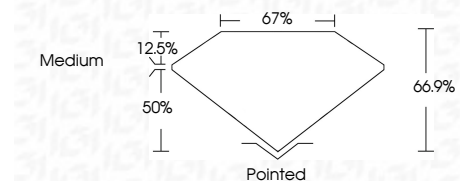
February 11, 2026
IGI Report Number **LG773633246**
Description **LABORATORY GROWN DIAMOND**
Shape and Cutting Style **CUT CORNERED
RECTANGULAR MODIFIED
BRILLIANT**
Measurements **9.89 X 7.15 X 4.78 MM**
GRADING RESULTS
Carat Weight **2.91 CARATS**
Color Grade **F**
Clarity Grade **VS 1**

February 11, 2026
IGI Report Number **LG773633246**
Description **LABORATORY GROWN DIAMOND**
Shape and Cutting Style **CUT CORNERED RECTANGULAR
MODIFIED BRILLIANT**
Measurements **9.89 X 7.15 X 4.78 MM**

PROPORTIONS



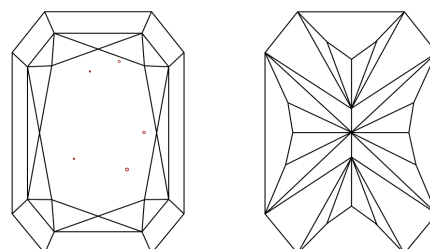
Sample Image Used



GRADING RESULTS

Carat Weight **2.91 CARATS**
Color Grade **F**
Clarity Grade **VS 1**

CLARITY CHARACTERISTICS



KEY TO SYMBOLS

Red symbols indicate internal characteristics.
Green symbols indicate external characteristics.

ADDITIONAL GRADING INFORMATION

Polish **EXCELLENT**
Symmetry **EXCELLENT**
Fluorescence **NONE**
Inscription(s) **IGI LG773633246**

COLOR

D E F G H I J Faint Very Light Light

CLARITY

FL	IF	VS ¹⁻²	VS ¹⁻²	SI ¹⁻²	I ¹⁻³
Flawless	Internally Flawless	Very Very Slightly Included	Very Slightly Included	Slightly Included	Included

ADDITIONAL GRADING INFORMATION

Polish **EXCELLENT**
Symmetry **EXCELLENT**
Fluorescence **NONE**
Inscription(s) **IGI LG773633246**
Comments: This Laboratory Grown Diamond was created by Chemical Vapor Deposition (CVD) growth process. Type IIa

Comments: This Laboratory Grown Diamond was created by Chemical Vapor Deposition (CVD) growth process. Type IIa



IGI

February 11, 2026
IGI Report No LG773633246
CUT CORNERED RECT. MODIFIED BRILLIANT
9.89 X 7.15 X 4.78 MM
2.91 CARATS
F
VS 1
66.9%
67%
Medium
Pointed
EXCELLENT
EXCELLENT
NONE
IGI LG773633246

Comments: This Laboratory Grown Diamond was created by Chemical Vapor Deposition (CVD) growth process. Type IIa