



ELECTRONIC COPY

LABORATORY GROWN DIAMOND REPORT

February 12, 2026 IGI Report Number LG773656875 Description LABORATORY GROWN DIAMOND Shape and Cutting Style CUT CORNERED RECTANGULAR MODIFIED BRILLIANT Measurements 10.31 X 7.12 X 4.85 MM

GRADING RESULTS

Carat Weight 3.03 CARATS Color Grade F Clarity Grade VS 1

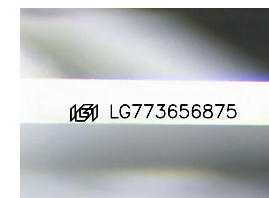
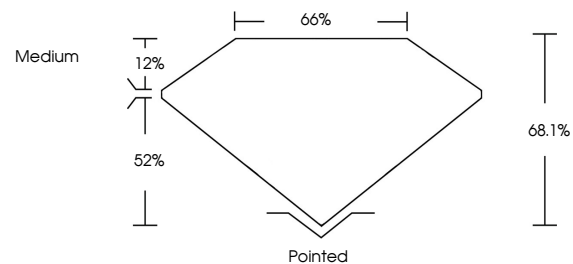
ADDITIONAL GRADING INFORMATION

Polish EXCELLENT Symmetry EXCELLENT Fluorescence NONE

Inscription(s) IGI LG773656875

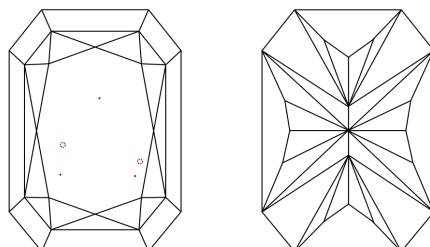
Comments: This Laboratory Grown Diamond was created by Chemical Vapor Deposition (CVD) growth process. Type IIa

PROPORTIONS



Sample Image Used

CLARITY CHARACTERISTICS



KEY TO SYMBOLS

Red symbols indicate internal characteristics. Green symbols indicate external characteristics.

COLOR

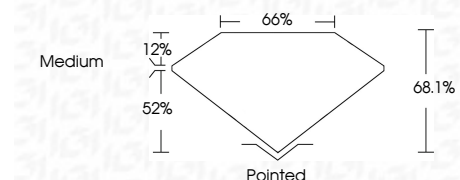
D E F G H I J Faint Very Light Light

CLARITY

FL IF VS 1-2 VS 2-2 SI 1-2 I 1-3 Flawless Internally Flawless Very Very Slightly Included Very Slightly Included Slightly Included Included



February 12, 2026 IGI Report Number LG773656875 Description LABORATORY GROWN DIAMOND Shape and Cutting Style CUT CORNERED RECTANGULAR MODIFIED BRILLIANT Measurements 10.31 X 7.12 X 4.85 MM GRADING RESULTS Carat Weight 3.03 CARATS Color Grade F Clarity Grade VS 1



ADDITIONAL GRADING INFORMATION

Polish EXCELLENT Symmetry EXCELLENT Fluorescence NONE Inscription(s) IGI LG773656875 Comments: This Laboratory Grown Diamond was created by Chemical Vapor Deposition (CVD) growth process. Type IIa



February 12, 2026 IGI Report No LG773656875 CUT CORNERED RECT. MODIFIED BRILLIANT 10.31 X 7.12 X 4.85 MM 3.03 CARATS F VS 1 68.1% 52% Medium Pointed EXCELLENT EXCELLENT NONE IGI LG773656875 Comments: This Laboratory Grown Diamond was created by Chemical Vapor Deposition (CVD) growth process. Type IIa