



ELECTRONIC COPY

LG773658076 Report verification at igi.org



February 13, 2026 IGI Report Number LG773658076 Description LABORATORY GROWN DIAMOND Shape and Cutting Style CUT CORNERED RECTANGULAR MODIFIED BRILLIANT Measurements 10.33 X 7.09 X 4.74 MM GRADING RESULTS Carat Weight 3.06 CARATS Color Grade G Clarity Grade VS 1

February 13, 2026 IGI Report Number LG773658076 Description LABORATORY GROWN DIAMOND Shape and Cutting Style CUT CORNERED RECTANGULAR MODIFIED BRILLIANT Measurements 10.33 X 7.09 X 4.74 MM

GRADING RESULTS

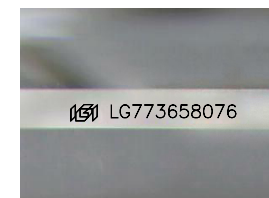
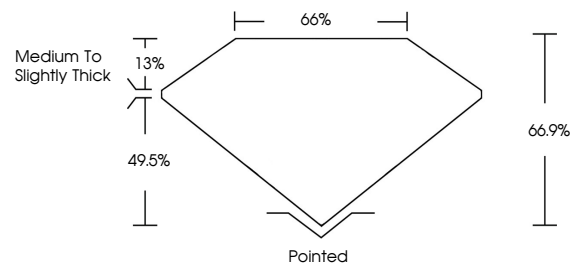
Carat Weight 3.06 CARATS Color Grade G Clarity Grade VS 1

ADDITIONAL GRADING INFORMATION

Polish EXCELLENT Symmetry EXCELLENT Fluorescence NONE Inscription(s) IGI LG773658076

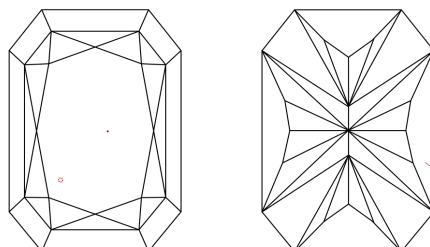
Comments: This Laboratory Grown Diamond was created by Chemical Vapor Deposition (CVD) growth process. Type IIa

PROPORTIONS



Sample Image Used

CLARITY CHARACTERISTICS



KEY TO SYMBOLS

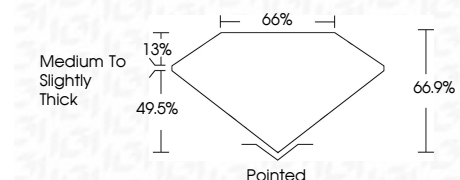
Red symbols indicate internal characteristics. Green symbols indicate external characteristics.

COLOR

D E F G H I J Faint Very Light Light

CLARITY

FL IF VS 1-2 VS 2-2 SI 1-2 I 1-3 Flawless Internally Flawless Very Very Slightly Included Very Slightly Included Slightly Included Included



ADDITIONAL GRADING INFORMATION

Polish EXCELLENT Symmetry EXCELLENT Fluorescence NONE Inscription(s) IGI LG773658076 Comments: This Laboratory Grown Diamond was created by Chemical Vapor Deposition (CVD) growth process. Type IIa



February 13, 2026 IGI Report No LG773658076 CUT CORNERED RECT. MODIFIED BRILLIANT 10.33 X 7.09 X 4.74 MM 3.06 CARATS G VS 1 66.9% 66% Medium to Slightly Thick Pointed EXCELLENT EXCELLENT NONE NONE IGI LG773658076 Comments: This Laboratory Grown Diamond was created by Chemical Vapor Deposition (CVD) growth process. Type IIa