



ELECTRONIC COPY

LG773662438
Report verification at igi.org



February 16, 2026
IGI Report Number **LG773662438**
Description **LABORATORY GROWN DIAMOND**
Shape and Cutting Style **PEAR BRILLIANT**
Measurements **13.69 X 8.33 X 5.39 MM**
GRADING RESULTS
Carat Weight **3.51 CARATS**
Color Grade **F**
Clarity Grade **VS 1**
Cut Grade **EXCELLENT**

February 16, 2026
IGI Report Number **LG773662438**
Description **LABORATORY GROWN DIAMOND**
Shape and Cutting Style **PEAR BRILLIANT**
Measurements **13.69 X 8.33 X 5.39 MM**

GRADING RESULTS

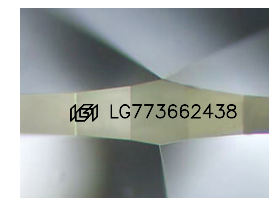
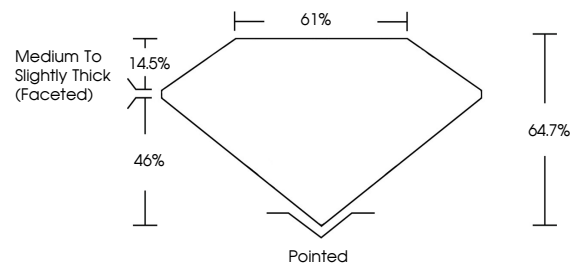
Carat Weight **3.51 CARATS**
Color Grade **F**
Clarity Grade **VS 1**
Cut Grade **EXCELLENT**

ADDITIONAL GRADING INFORMATION

Polish **EXCELLENT**
Symmetry **EXCELLENT**
Fluorescence **NONE**
Inscription(s) **IGI LG773662438**

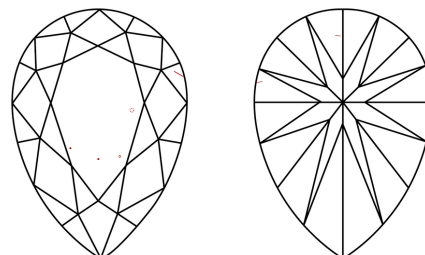
Comments: This Laboratory Grown Diamond was created by Chemical Vapor Deposition (CVD) growth process.
Type IIa

PROPORTIONS



Sample Image Used

CLARITY CHARACTERISTICS



KEY TO SYMBOLS

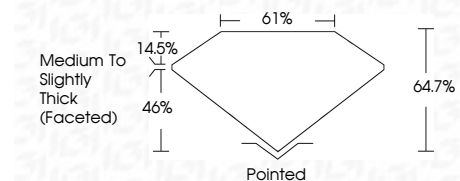
Red symbols indicate internal characteristics.
Green symbols indicate external characteristics.

COLOR

D E F G H I J Faint Very Light Light

CLARITY

FL	IF	VS ¹⁻²	VS ¹⁻²	SI ¹⁻²	I ¹⁻³
Flawless	Internally Flawless	Very Very Slightly Included	Very Slightly Included	Slightly Included	Included



ADDITIONAL GRADING INFORMATION

Polish **EXCELLENT**
Symmetry **EXCELLENT**
Fluorescence **NONE**
Inscription(s) **IGI LG773662438**
Comments: This Laboratory Grown Diamond was created by Chemical Vapor Deposition (CVD) growth process.
Type IIa



February 16, 2026
IGI Report No LG773662438
PEAR BRILLIANT
13.69 X 8.33 X 5.39 MM
3.51 CARATS
F
EXCELLENT
VS 1
64.7%
61%
Medium To Slightly Thick (Faceted)
Pointed
EXCELLENT
EXCELLENT
NONE
IGI LG773662438
Comments: This Laboratory Grown Diamond was created by Chemical Vapor Deposition (CVD) growth process.
Type IIa