



LABORATORY GROWN DIAMOND REPORT

February 16, 2026
 IGI Report Number **LG774603838**
 Description **LABORATORY GROWN DIAMOND**
 Shape and Cutting Style **OVAL BRILLIANT**
 Measurements **6.46 X 4.74 X 2.81 MM**

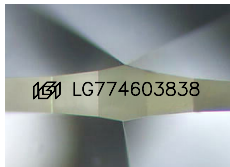
GRADING RESULTS

Carat Weight **0.54 CARAT**
 Color Grade **G**
 Clarity Grade **VS 1**

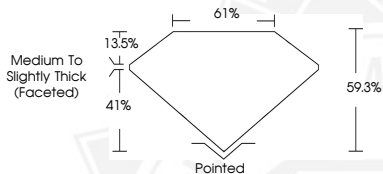
ADDITIONAL GRADING INFORMATION

Polish **EXCELLENT**
 Symmetry **EXCELLENT**
 Fluorescence **NONE**
 Inscription(s) **IGI LG774603838**

Comments: As Grown - No indication of post-growth treatment. This Laboratory Grown Diamond was created by High Pressure High Temperature (HPHT) growth process. Type II Faint Blue



Sample Image Used



February 16, 2026
 IGI Report Number **LG774603838**
OVAL BRILLIANT
LABORATORY GROWN DIAMOND
6.46 X 4.74 X 2.81 MM
 Carat Weight **0.54 CARAT**
 Color Grade **G**
 Clarity Grade **VS 1**
 Polish **EXCELLENT**
 Symmetry **EXCELLENT**
 Fluorescence **NONE**
 Inscription(s) **IGI LG774603838**

Comments: As Grown - No indication of post-growth treatment. This Laboratory Grown Diamond was created by High Pressure High Temperature (HPHT) growth process. Type II Faint Blue



February 16, 2026
 IGI Report Number **LG774603838**
OVAL BRILLIANT
LABORATORY GROWN DIAMOND
6.46 X 4.74 X 2.81 MM
 Carat Weight **0.54 CARAT**
 Color Grade **G**
 Clarity Grade **VS 1**
 Polish **EXCELLENT**
 Symmetry **EXCELLENT**
 Fluorescence **NONE**
 Inscription(s) **IGI LG774603838**

Comments: As Grown - No indication of post-growth treatment. This Laboratory Grown Diamond was created by High Pressure High Temperature (HPHT) growth process. Type II Faint Blue



THIS DOCUMENT WAS PRODUCED WITH THE FOLLOWING SECURITY MEASURES: SPECIAL DOCUMENT PAPER, INK SCREENS, WATERMARK, BACKGROUND DESIGNS, HOLOGRAM AND OTHER SECURITY FEATURES NOT LISTED AND DO EXCEED DOCUMENT SECURITY INDUSTRY GUIDELINES.