



ELECTRONIC COPY

LG774610479
Report verification at igi.org



March 23, 2026
IGI Report Number **LG774610479**
Description **LABORATORY GROWN DIAMOND**
Shape and Cutting Style **CUT CORNERED
RECTANGULAR MODIFIED
BRILLIANT**
Measurements **7.02 X 4.91 X 3.37 MM**
GRADING RESULTS
Carat Weight **1.02 CARAT**
Color Grade **E**
Clarity Grade **VVS 1**

March 23, 2026
IGI Report Number **LG774610479**
Description **LABORATORY GROWN DIAMOND**
Shape and Cutting Style **CUT CORNERED RECTANGULAR
MODIFIED BRILLIANT**
Measurements **7.02 X 4.91 X 3.37 MM**

GRADING RESULTS

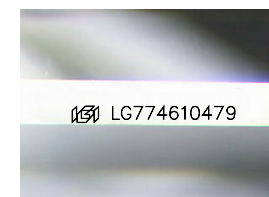
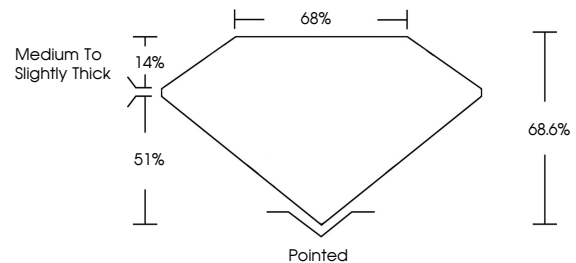
Carat Weight **1.02 CARAT**
Color Grade **E**
Clarity Grade **VVS 1**

ADDITIONAL GRADING INFORMATION

Polish **EXCELLENT**
Symmetry **EXCELLENT**
Fluorescence **NONE**
Inscription(s) **IGI LG774610479**

Comments: As Grown - No indication of post-growth treatment.
This Laboratory Grown Diamond was created by High Pressure High Temperature (HPHT) growth process. Type II

PROPORTIONS



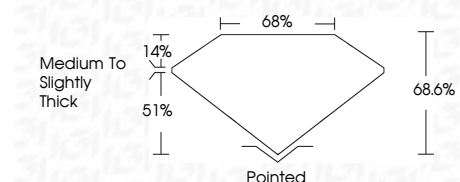
Sample Image Used

COLOR

D E F G H I J Faint Very Light Light

CLARITY

FL	IF	VVS ¹⁻²	VS ¹⁻²	SI ¹⁻²	I ¹⁻³
Flawless	Internally Flawless	Very Very Slightly Included	Very Slightly Included	Slightly Included	Included



ADDITIONAL GRADING INFORMATION

Polish **EXCELLENT**
Symmetry **EXCELLENT**
Fluorescence **NONE**
Inscription(s) **IGI LG774610479**
Comments: As Grown - No indication of post-growth treatment.
This Laboratory Grown Diamond was created by High Pressure High Temperature (HPHT) growth process. Type II



IGI



March 23, 2026
IGI Report No **LG774610479**
CUT CORNERED RECT. MODIFIED BRILLIANT
7.02 X 4.91 X 3.37 MM
Carat Weight **1.02 CARAT**
Color Grade **E**
Clarity Grade **VVS 1**
Depth **68.6%**
Table **68%**
Girdle **Medium to Slightly Thick**
Culet **Pointed**
Polish **EXCELLENT**
Symmetry **EXCELLENT**
Fluorescence **NONE**
Inscription(s) **IGI LG774610479**

Comments: As Grown - No indication of post-growth treatment.
This Laboratory Grown Diamond was created by High Pressure High Temperature (HPHT) growth process. Type II