



ELECTRONIC COPY

LABORATORY GROWN DIAMOND REPORT

February 12, 2026 IGI Report Number LG774610643 Description LABORATORY GROWN DIAMOND Shape and Cutting Style CUT CORNERED RECTANGULAR MODIFIED BRILLIANT Measurements 11.08 X 7.62 X 5.03 MM

GRADING RESULTS

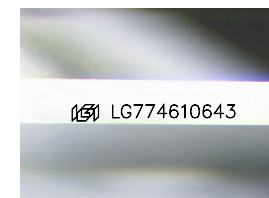
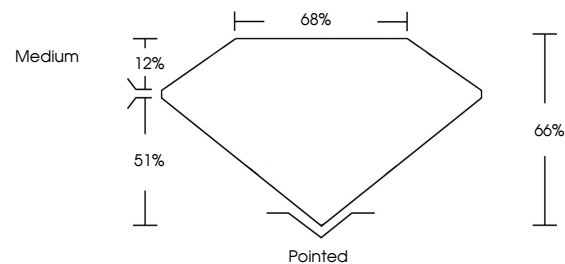
Carat Weight 3.57 CARATS Color Grade G Clarity Grade VVS 2

ADDITIONAL GRADING INFORMATION

Polish EXCELLENT Symmetry EXCELLENT Fluorescence NONE Inscription(s) LG774610643

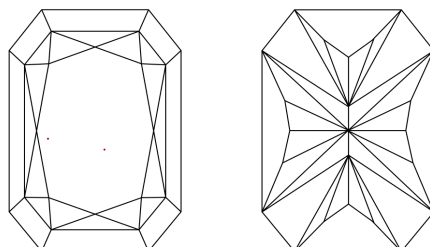
Comments: This Laboratory Grown Diamond was created by Chemical Vapor Deposition (CVD) growth process. Type IIa

PROPORTIONS



Sample Image Used

CLARITY CHARACTERISTICS



KEY TO SYMBOLS

Red symbols indicate internal characteristics. Green symbols indicate external characteristics.

COLOR

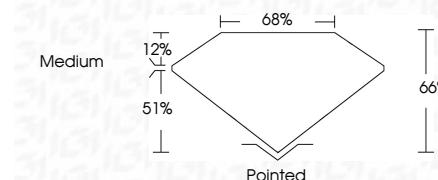
D E F G H I J Faint Very Light Light

CLARITY

FL IF VVS 1-2 VS 1-2 SI 1-2 I 1-3 Flawless Internally Flawless Very Very Slightly Included Very Slightly Included Slightly Included Included



February 12, 2026 IGI Report Number LG774610643 Description LABORATORY GROWN DIAMOND Shape and Cutting Style CUT CORNERED RECTANGULAR MODIFIED BRILLIANT Measurements 11.08 X 7.62 X 5.03 MM GRADING RESULTS Carat Weight 3.57 CARATS Color Grade G Clarity Grade VVS 2



ADDITIONAL GRADING INFORMATION

Polish EXCELLENT Symmetry EXCELLENT Fluorescence NONE Inscription(s) LG774610643 Comments: This Laboratory Grown Diamond was created by Chemical Vapor Deposition (CVD) growth process. Type IIa



February 12, 2026 IGI Report No LG774610643 CUT CORNERED RECT. MODIFIED BRILLIANT 11.08 X 7.62 X 5.03 MM 3.57 CARATS G VVS 2 66% 65% Medium Pointed EXCELLENT EXCELLENT NONE NONE LG774610643 Comments: This Laboratory Grown Diamond was created by Chemical Vapor Deposition (CVD) growth process. Type IIa