



ELECTRONIC COPY

LG774613100 Report verification at igi.org



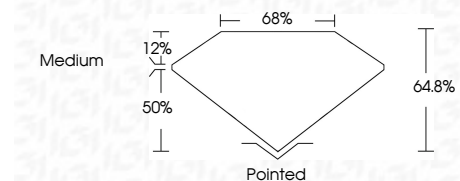
February 16, 2026 IGI Report Number LG774613100 Description LABORATORY GROWN DIAMOND

Shape and Cutting Style CUT CORNERED RECTANGULAR MODIFIED BRILLIANT

Measurements 10.13 X 6.98 X 4.52 MM

GRADING RESULTS

Carat Weight 2.82 CARATS Color Grade G Clarity Grade VVS 2



ADDITIONAL GRADING INFORMATION

Polish EXCELLENT Symmetry EXCELLENT Fluorescence NONE Inscription(s) LG774613100

Comments: This Laboratory Grown Diamond was created by Chemical Vapor Deposition (CVD) growth process. Type IIa



February 16, 2026 IGI Report Number LG774613100 Description LABORATORY GROWN DIAMOND Shape and Cutting Style CUT CORNERED RECTANGULAR MODIFIED BRILLIANT Measurements 10.13 X 6.98 X 4.52 MM

GRADING RESULTS

Carat Weight 2.82 CARATS Color Grade G Clarity Grade VVS 2

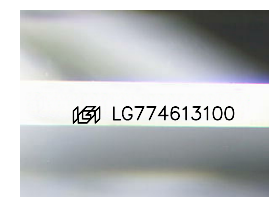
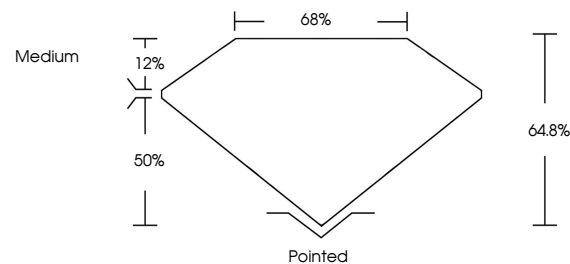
ADDITIONAL GRADING INFORMATION

Polish EXCELLENT Symmetry EXCELLENT Fluorescence NONE

Inscription(s) LG774613100

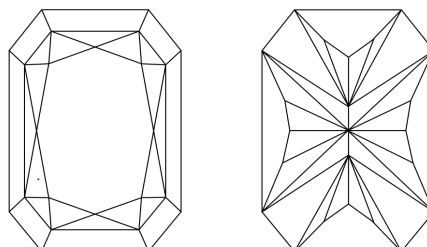
Comments: This Laboratory Grown Diamond was created by Chemical Vapor Deposition (CVD) growth process. Type IIa

PROPORTIONS



Sample Image Used

CLARITY CHARACTERISTICS



KEY TO SYMBOLS

Red symbols indicate internal characteristics. Green symbols indicate external characteristics.

COLOR

D E F G H I J Faint Very Light Light

CLARITY

FL IF VVS 1-2 VS 1-2 SI 1-2 I 1-3 Flawless Internally Flawless Very Very Slightly Included Very Slightly Included Slightly Included Included

February 16, 2026 IGI Report No LG774613100 CUT CORNERED RECT. MODIFIED BRILLIANT 10.13 X 6.98 X 4.52 MM 2.82 CARATS G VVS 2 64.8% 50% Medium Pointed EXCELLENT EXCELLENT NONE LG774613100

Comments: This Laboratory Grown Diamond was created by Chemical Vapor Deposition (CVD) growth process. Type IIa