



**ELECTRONIC COPY**

LG774634699  
Report verification at igi.org



February 11, 2026

IGI Report Number **LG774634699**

Description **LABORATORY GROWN DIAMOND**

Shape and Cutting Style **ROUND BRILLIANT**

Measurements **9.15 - 9.19 X 5.58 MM**

**GRADING RESULTS**

Carat Weight **2.88 CARATS**

Color Grade **D**

Clarity Grade **VS 1**

Cut Grade **IDEAL**

February 11, 2026

IGI Report Number **LG774634699**

Description **LABORATORY GROWN DIAMOND**

Shape and Cutting Style **ROUND BRILLIANT**

Measurements **9.15 - 9.19 X 5.58 MM**

**GRADING RESULTS**

Carat Weight **2.88 CARATS**

Color Grade **D**

Clarity Grade **VS 1**

Cut Grade **IDEAL**

**ADDITIONAL GRADING INFORMATION**

Polish **EXCELLENT**

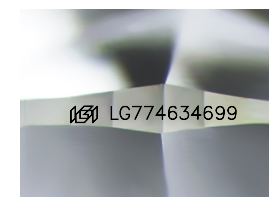
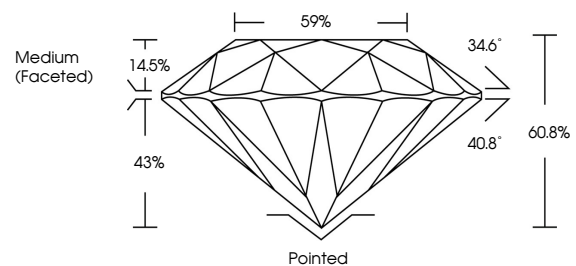
Symmetry **EXCELLENT**

Fluorescence **NONE**

Inscription(s) **IGI LG774634699**

Comments: This Laboratory Grown Diamond was created by Chemical Vapor Deposition (CVD) growth process. Type IIa

**PROPORTIONS**



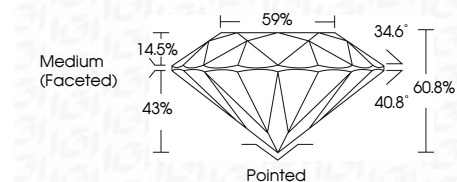
Sample Image Used

**COLOR**

D E F G H I J Faint Very Light Light

**CLARITY**

FL	IF	VS <sup>1-2</sup>	VS <sup>1-2</sup>	SI <sup>1-2</sup>	I <sup>1-3</sup>
Flawless	Internally Flawless	Very Very Slightly Included	Very Slightly Included	Slightly Included	Included



**ADDITIONAL GRADING INFORMATION**

Polish **EXCELLENT**

Symmetry **EXCELLENT**

Fluorescence **NONE**

Inscription(s) **IGI LG774634699**

Comments: This Laboratory Grown Diamond was created by Chemical Vapor Deposition (CVD) growth process. Type IIa



**IGI**



February 11, 2026  
IGI Report No LG774634699  
ROUND BRILLIANT

9.15 - 9.19 X 5.58 MM

2.88 CARATS

Color Grade **D**

Clarity Grade **VS 1**

Cut Grade **IDEAL**

Depth **60.8%**

Table **59%**

Girdle **Medium (Faceted)**

Culet **Pointed**

Polish **EXCELLENT**

Symmetry **EXCELLENT**

Fluorescence **NONE**

Inscription(s) **IGI LG774634699**

Comments: This Laboratory Grown Diamond was created by Chemical Vapor Deposition (CVD) growth process. Type IIa