



**ELECTRONIC COPY**

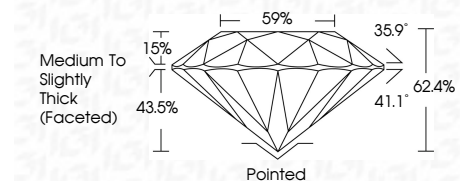
LG774638463  
Report verification at igi.org



February 14, 2026  
IGI Report Number **LG774638463**  
Description **LABORATORY GROWN DIAMOND**  
Shape and Cutting Style **ROUND BRILLIANT**  
Measurements **6.95 - 6.98 X 4.34 MM**

**GRADING RESULTS**

Carat Weight **1.30 CARAT**  
Color Grade **D**  
Clarity Grade **VVS 2**  
Cut Grade **IDEAL**

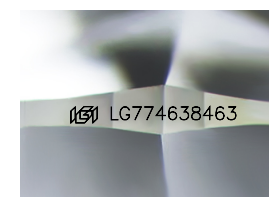


**ADDITIONAL GRADING INFORMATION**

Polish **EXCELLENT**  
Symmetry **EXCELLENT**  
Fluorescence **NONE**  
Inscription(s) **IGI LG774638463**  
Comments: As Grown - No indication of post-growth treatment.  
This Laboratory Grown Diamond was created by High Pressure High Temperature (HPHT) growth process.  
Type II

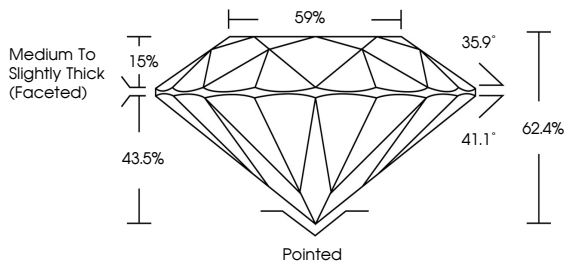


February 14, 2026  
IGI Report No LG774638463  
**ROUND BRILLIANT**  
6.95 - 6.98 X 4.34 MM  
1.30 CARAT  
Color Grade **D**  
Clarity Grade **VVS 2**  
Cut Grade **IDEAL**  
Depth **62.4%**  
Table **59%**  
Girdle **Medium To Slightly Thick (Faceted)**  
Culet **Pointed**  
Polish **EXCELLENT**  
Symmetry **EXCELLENT**  
Fluorescence **NONE**  
Inscriptions(s) **IGI LG774638463**  
Comments: As Grown - No indication of post-growth treatment.  
This Laboratory Grown Diamond was created by High Pressure High Temperature (HPHT) growth process.  
Type II

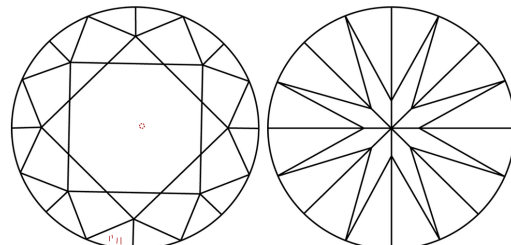


Sample Image Used

**PROPORTIONS**



**CLARITY CHARACTERISTICS**



**KEY TO SYMBOLS**

Red symbols indicate internal characteristics.  
Green symbols indicate external characteristics.

**COLOR**

D E F G H I J Faint Very Light Light

**CLARITY**

FL	IF	VVS <sup>1-2</sup>	VS <sup>1-2</sup>	SI <sup>1-2</sup>	I <sup>1-3</sup>
Flawless	Internally Flawless	Very Very Slightly Included	Very Slightly Included	Slightly Included	Included

