



ELECTRONIC COPY

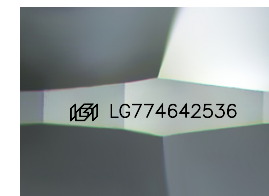
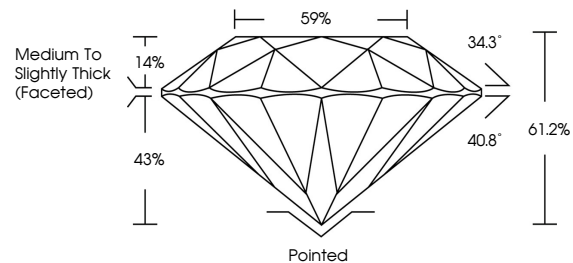
LG774642536
Report verification at igi.org



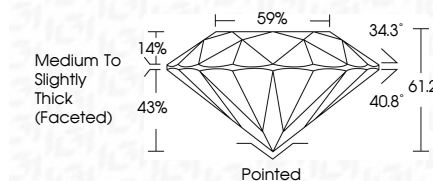
February 19, 2026
IGI Report Number **LG774642536**
Description **LABORATORY GROWN DIAMOND**
Shape and Cutting Style **ROUND BRILLIANT**
Measurements **20.29 - 20.41 X 12.47 MM**
GRADING RESULTS
Carat Weight **32.00 CARATS**
Color Grade **I**
Clarity Grade **SI 1**
Cut Grade **IDEAL**

February 19, 2026
IGI Report Number **LG774642536**
Description **LABORATORY GROWN DIAMOND**
Shape and Cutting Style **ROUND BRILLIANT**
Measurements **20.29 - 20.41 X 12.47 MM**
GRADING RESULTS
Carat Weight **32.00 CARATS**
Color Grade **I**
Clarity Grade **SI 1**
Cut Grade **IDEAL**

PROPORTIONS



Sample Image Used



ADDITIONAL GRADING INFORMATION

Polish **EXCELLENT**
Symmetry **EXCELLENT**
Fluorescence **NONE**
Inscription(s) **IGI LG774642536**

Comments: This Laboratory Grown Diamond was created by Chemical Vapor Deposition (CVD) growth process. Type IIa

ADDITIONAL GRADING INFORMATION

Polish **EXCELLENT**
Symmetry **EXCELLENT**
Fluorescence **NONE**
Inscription(s) **IGI LG774642536**
Comments: This Laboratory Grown Diamond was created by Chemical Vapor Deposition (CVD) growth process. Type IIa

COLOR

D E F G H I J Faint Very Light Light

CLARITY

FL	IF	VS ¹⁻²	VS ¹⁻²	SI ¹⁻²	I ¹⁻³
Flawless	Internally Flawless	Very Very Slightly Included	Very Slightly Included	Slightly Included	Included



IGI



February 19, 2026
IGI Report No LG774642536
ROUND BRILLIANT
20.29 - 20.41 X 12.47 MM
32.00 CARATS
Color Grade **I**
Clarity Grade **SI 1**
Depth **IDEAL**
Table **61.2%**
Girdle **59%**
Medium To Slightly Thick (Faceted)
Culet **Pointed**
Polish **EXCELLENT**
Symmetry **EXCELLENT**
Fluorescence **NONE**
Inscriptions(s) **IGI LG774642536**
Comments: This Laboratory Grown Diamond was created by Chemical Vapor Deposition (CVD) growth process. Type IIa