



ELECTRONIC COPY

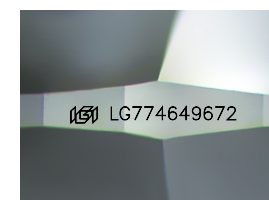
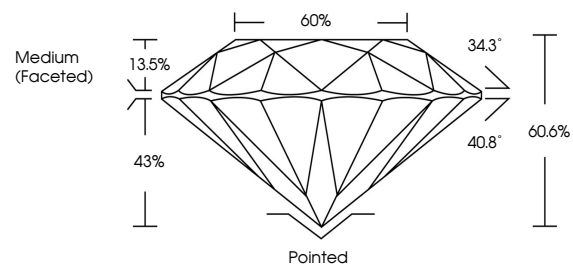
LG774649672
Report verification at igi.org



April 13, 2026
IGI Report Number LG774649672
Description LABORATORY GROWN DIAMOND
Shape and Cutting Style ROUND BRILLIANT
Measurements 7.12 - 7.15 X 4.32 MM

April 13, 2026
IGI Report Number LG774649672
Description LABORATORY GROWN DIAMOND
Shape and Cutting Style ROUND BRILLIANT
Measurements 7.12 - 7.15 X 4.32 MM

PROPORTIONS



Sample Image Used

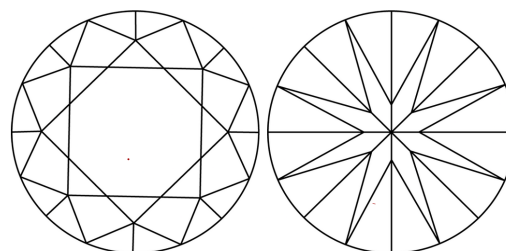
GRADING RESULTS

Carat Weight 1.36 CARAT
Color Grade D
Clarity Grade VVS 2
Cut Grade IDEAL

GRADING RESULTS

Carat Weight 1.36 CARAT
Color Grade D
Clarity Grade VVS 2
Cut Grade IDEAL

CLARITY CHARACTERISTICS



KEY TO SYMBOLS

Red symbols indicate internal characteristics.
Green symbols indicate external characteristics.



COLOR

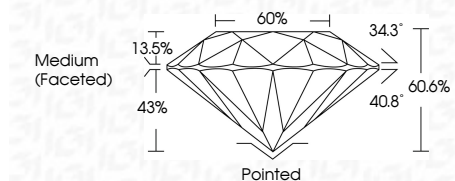
D E F G H I J Faint Very Light Light

CLARITY

FL IF VVS 1-2 VS 1-2 SI 1-2 I 1-3
Flawless Internally Flawless Very Very Slightly Included Very Slightly Included Slightly Included Included

ADDITIONAL GRADING INFORMATION

Polish EXCELLENT
Symmetry EXCELLENT
Fluorescence NONE
Inscription(s) LG774649672
Comments: HEARTS & ARROWS
This Laboratory Grown Diamond was created by Chemical Vapor Deposition (CVD) growth process. Type IIa



Summary table of report details including date, report number, description, measurements, grading results, and additional information.