



LABORATORY GROWN DIAMOND REPORT

February 14, 2026
 IGI Report Number **LG775618546**
 Description **LABORATORY GROWN DIAMOND**
 Shape and Cutting Style **EMERALD CUT**
 Measurements **5.11 X 3.64 X 2.40 MM**

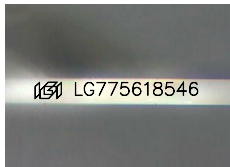
GRADING RESULTS

Carat Weight **0.43 CARAT**
 Color Grade **E**
 Clarity Grade **VS 1**

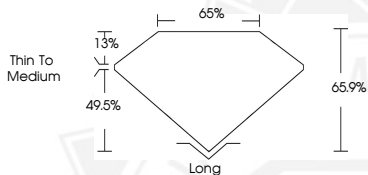
ADDITIONAL GRADING INFORMATION

Polish **EXCELLENT**
 Symmetry **EXCELLENT**
 Fluorescence **NONE**
 Inscription(s) **IGI LG775618546**

Comments: This Laboratory Grown Diamond was created by
 Chemical Vapor Deposition (CVD) growth process.
 Type IIa



Sample Image Used



February 14, 2026
 IGI Report Number **LG775618546**
EMERALD CUT
LABORATORY GROWN DIAMOND
5.11 X 3.64 X 2.40 MM
 Carat Weight **0.43 CARAT**
 Color Grade **E**
 Clarity Grade **VS 1**
 Polish **EXCELLENT**
 Symmetry **EXCELLENT**
 Fluorescence **NONE**
 Inscription(s) **IGI LG775618546**

Comments: This Laboratory Grown
 Diamond was created by
 Chemical Vapor Deposition (CVD)
 growth process. Type IIa



February 14, 2026
 IGI Report Number **LG775618546**
EMERALD CUT
LABORATORY GROWN DIAMOND
5.11 X 3.64 X 2.40 MM
 Carat Weight **0.43 CARAT**
 Color Grade **E**
 Clarity Grade **VS 1**
 Polish **EXCELLENT**
 Symmetry **EXCELLENT**
 Fluorescence **NONE**
 Inscription(s) **IGI LG775618546**

Comments: This Laboratory Grown
 Diamond was created by
 Chemical Vapor Deposition (CVD)
 growth process. Type IIa



THIS DOCUMENT WAS PRODUCED WITH THE FOLLOWING SECURITY MEASURES: SPECIAL DOCUMENT PAPER, INK SCREENS, WATERMARK, BACKGROUND DESIGNS, HOLOGRAM AND OTHER SECURITY FEATURES NOT LISTED AND DO EXCEED DOCUMENT SECURITY INDUSTRY GUIDELINES.