



ELECTRONIC COPY

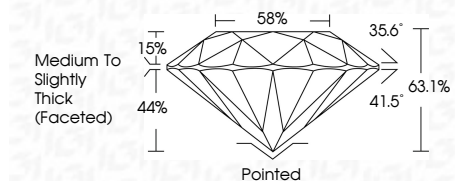
LG775627111
Report verification at igi.org



February 19, 2026
IGI Report Number LG775627111
Description LABORATORY GROWN DIAMOND
Shape and Cutting Style ROUND BRILLIANT
Measurements 8.11 - 8.16 X 5.13 MM

GRADING RESULTS

Carat Weight 2.09 CARATS
Color Grade D
Clarity Grade VS 1
Cut Grade EXCELLENT

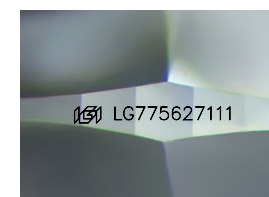


ADDITIONAL GRADING INFORMATION

Polish EXCELLENT
Symmetry EXCELLENT
Fluorescence NONE
Inscription(s) IGI LG775627111
Comments: This Laboratory Grown Diamond was created by Chemical Vapor Deposition (CVD) growth process. Type IIa

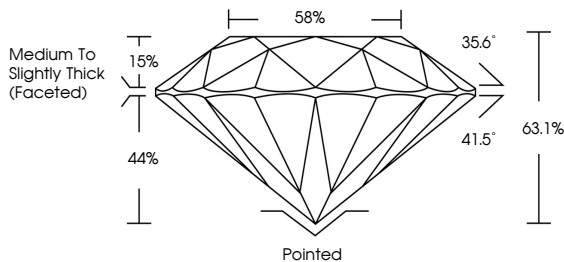


February 19, 2026
IGI Report No LG775627111
ROUND BRILLIANT
2.09 CARATS
D
Color Grade EXCELLENT
Clarity Grade VS 1
Depth 63.1%
Table 58%
Medium To Slightly Thick (Faceted)
Cut Grade EXCELLENT
Symmetry EXCELLENT
Fluorescence NONE
Inscription(s) IGI LG775627111
Comments: This Laboratory Grown Diamond was created by Chemical Vapor Deposition (CVD) growth process. Type IIa

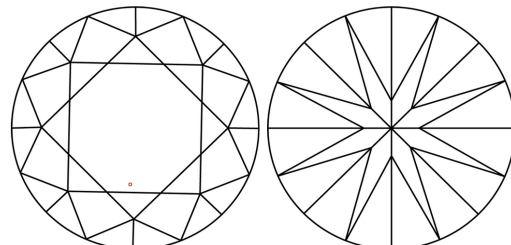


Sample Image Used

PROPORTIONS



CLARITY CHARACTERISTICS



KEY TO SYMBOLS

Red symbols indicate internal characteristics.
Green symbols indicate external characteristics.

COLOR

D E F G H I J Faint Very Light Light

CLARITY

FL IF VS 1-2 VS 2-3 SI 1-2 I 1-3
Flawless Internally Flawless Very Very Slightly Included Very Slightly Included Slightly Included Included

