



ELECTRONIC COPY

LG775628339
Report verification at igi.org



February 25, 2026

IGI Report Number **LG775628339**

Description **LABORATORY GROWN DIAMOND**

Shape and Cutting Style **ROUND BRILLIANT**

Measurements **6.92 - 6.95 X 4.14 MM**

GRADING RESULTS

Carat Weight **1.21 CARAT**

Color Grade **G**

Clarity Grade **VS 1**

Cut Grade **GOOD**

February 25, 2026

IGI Report Number **LG775628339**

Description **LABORATORY GROWN DIAMOND**

Shape and Cutting Style **ROUND BRILLIANT**

Measurements **6.92 - 6.95 X 4.14 MM**

GRADING RESULTS

Carat Weight **1.21 CARAT**

Color Grade **G**

Clarity Grade **VS 1**

Cut Grade **GOOD**

ADDITIONAL GRADING INFORMATION

Polish **VERY GOOD**

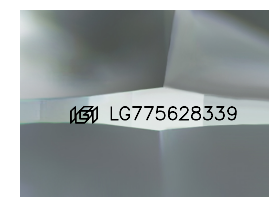
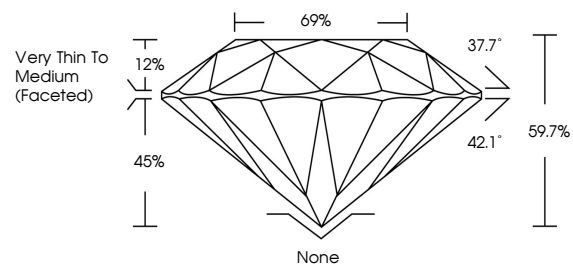
Symmetry **GOOD**

Fluorescence **NONE**

Inscription(s) **IGI LG775628339**

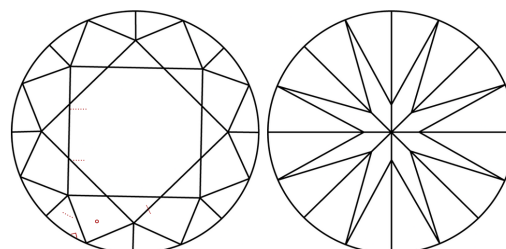
Comments: This Laboratory Grown Diamond was created by Chemical Vapor Deposition (CVD) growth process.
Type IIa

PROPORTIONS



Sample Image Used

CLARITY CHARACTERISTICS



KEY TO SYMBOLS

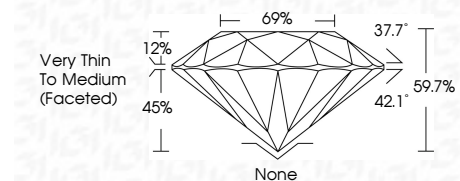
Red symbols indicate internal characteristics.
Green symbols indicate external characteristics.

COLOR

D E F G H I J Faint Very Light Light

CLARITY

FL	IF	VS ¹⁻²	VS ¹⁻²	SI ¹⁻²	I ¹⁻³
Flawless	Internally Flawless	Very Very Slightly Included	Very Slightly Included	Slightly Included	Included



ADDITIONAL GRADING INFORMATION

Polish **VERY GOOD**

Symmetry **GOOD**

Fluorescence **NONE**

Inscription(s) **IGI LG775628339**

Comments: This Laboratory Grown Diamond was created by Chemical Vapor Deposition (CVD) growth process.
Type IIa



February 25, 2026	1.21 CARAT	G	VS 1	GOOD	69%	Very Thin To Medium (Faceted)	None	VERY GOOD	GOOD	NONE	IGI LG775628339
IGI Report No LG775628339	6.92 - 6.95 X 4.14 MM	ROUND BRILLIANT	Color Grade	Clarity Grade	Depth	Table	Girdle	Polish	Symmetry	Fluorescence	Inscription(s)

Comments: This Laboratory Grown Diamond was created by Chemical Vapor Deposition (CVD) growth process.
Type IIa