



LABORATORY GROWN DIAMOND REPORT

February 19, 2026
 IGI Report Number **LG775632344**
 Description **LABORATORY GROWN DIAMOND**
 Shape and Cutting Style **ROUND BRILLIANT**
 Measurements **4.87 - 4.88 X 3.03 MM**

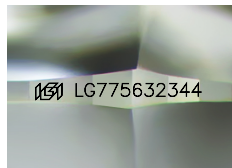
GRADING RESULTS

Carat Weight **0.45 CARAT**
 Color Grade **E**
 Clarity Grade **VVS 2**
 Cut Grade **IDEAL**

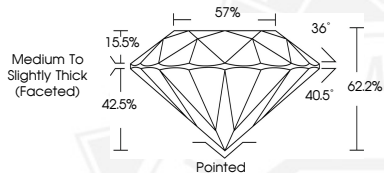
ADDITIONAL GRADING INFORMATION

Polish **EXCELLENT**
 Symmetry **EXCELLENT**
 Fluorescence **NONE**
 Inscription(s) **IGI LG775632344**

Comments: As Grown - No indication of post-growth treatment. This Laboratory Grown Diamond was created by High Pressure High Temperature (HPHT) growth process. Type II



Sample Image Used



February 19, 2026
 IGI Report Number **LG775632344**
 ROUND BRILLIANT
 LABORATORY GROWN DIAMOND
 4.87 - 4.88 X 3.03 MM
 0.45 CARAT
 E
 VVS 2
 IDEAL
 EXCELLENT
 EXCELLENT
 NONE
 IGI LG775632344

Comments: As Grown - No indication of post-growth treatment. This Laboratory Grown Diamond was created by High Pressure High Temperature (HPHT) growth process. Type II



February 19, 2026
 IGI Report Number **LG775632344**
 ROUND BRILLIANT
 LABORATORY GROWN DIAMOND
 4.87 - 4.88 X 3.03 MM
 0.45 CARAT
 E
 VVS 2
 IDEAL
 EXCELLENT
 EXCELLENT
 NONE
 IGI LG775632344

Comments: As Grown - No indication of post-growth treatment. This Laboratory Grown Diamond was created by High Pressure High Temperature (HPHT) growth process. Type II

THIS DOCUMENT WAS PRODUCED WITH THE FOLLOWING SECURITY MEASURES: SPECIAL DOCUMENT PAPER, INK SCREENS, WATERMARK, BACKGROUND DESIGNS, HOLOGRAM AND OTHER SECURITY FEATURES NOT LISTED AND DO EXCEED DOCUMENT SECURITY INDUSTRY GUIDELINES.