



February 20, 2026

IGI Report Number **LG775633436**

**ROUND BRILLIANT  
LABORATORY GROWN DIAMOND  
4.97 - 5.01 X 3.00 MM**

**0.45 CARAT  
D  
VVS 2  
IDEAL  
EXCELLENT  
EXCELLENT  
NONE  
Inscription(s) LG775633436**

Comments: This Laboratory Grown Diamond was created by Chemical Vapor Deposition (CVD) growth process. Type IIa

**LABORATORY GROWN DIAMOND REPORT**

February 20, 2026

IGI Report Number

**LG775633436**

Description

**LABORATORY GROWN DIAMOND**

Shape and Cutting Style

**ROUND BRILLIANT**

Measurements

**4.97 - 5.01 X 3.00 MM**

**GRADING RESULTS**

Carat Weight

**0.45 CARAT**

Color Grade

**D**

Clarity Grade

**VVS 2**

Cut Grade

**IDEAL**

**ADDITIONAL GRADING INFORMATION**

Polish

**EXCELLENT**

Symmetry

**EXCELLENT**

Fluorescence

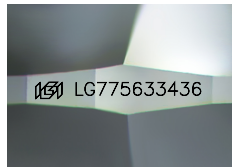
**NONE**

Inscription(s)

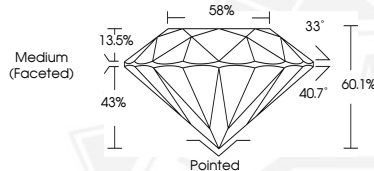
**LG775633436**

Comments: This Laboratory Grown Diamond was created by Chemical Vapor Deposition (CVD) growth process.

Type IIa



Sample Image Used



February 20, 2026

IGI Report Number **LG775633436**

**ROUND BRILLIANT  
LABORATORY GROWN DIAMOND  
4.97 - 5.01 X 3.00 MM**

**0.45 CARAT  
D  
VVS 2  
IDEAL  
EXCELLENT  
EXCELLENT  
NONE  
Inscription(s) LG775633436**

Comments: This Laboratory Grown Diamond was created by Chemical Vapor Deposition (CVD) growth process. Type IIa



THIS DOCUMENT WAS PRODUCED WITH THE FOLLOWING SECURITY MEASURES: SPECIAL DOCUMENT PAPER, INK SCREENS, WATERMARK, BACKGROUND DESIGNS, HOLOGRAM AND OTHER SECURITY FEATURES NOT LISTED AND DO EXCEED DOCUMENT SECURITY INDUSTRY GUIDELINES.