



February 28, 2026

IGI Report Number **LG775633675**

**ROUND BRILLIANT
LABORATORY GROWN DIAMOND
3.72 - 3.74 X 2.26 MM**

Carat Weight	0.19 CARAT
Color Grade	F
Clarity Grade	VVS 1
Cut Grade	EXCELLENT
Polish	VERY GOOD
Symmetry	VERY GOOD
Fluorescence	NONE
Inscription(s)	IGI LG775633675

Comments: This Laboratory Grown Diamond was created by Chemical Vapor Deposition (CVD) growth process. Type IIa

LABORATORY GROWN DIAMOND REPORT

February 28, 2026

IGI Report Number **LG775633675**

Description **LABORATORY GROWN DIAMOND**

Shape and Cutting Style **ROUND BRILLIANT**

Measurements **3.72 - 3.74 X 2.26 MM**

GRADING RESULTS

Carat Weight **0.19 CARAT**

Color Grade **F**

Clarity Grade **VVS 1**

Cut Grade **EXCELLENT**

ADDITIONAL GRADING INFORMATION

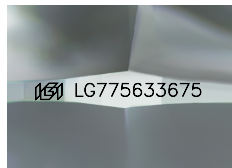
Polish **VERY GOOD**

Symmetry **VERY GOOD**

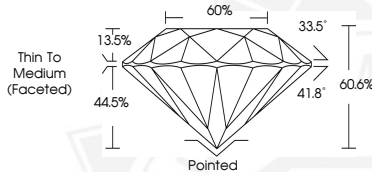
Fluorescence **NONE**

Inscription(s) **IGI LG775633675**

Comments: This Laboratory Grown Diamond was created by Chemical Vapor Deposition (CVD) growth process. Type IIa



Sample Image Used



February 28, 2026

IGI Report Number **LG775633675**

**ROUND BRILLIANT
LABORATORY GROWN DIAMOND
3.72 - 3.74 X 2.26 MM**

Carat Weight	0.19 CARAT
Color Grade	F
Clarity Grade	VVS 1
Cut Grade	EXCELLENT
Polish	VERY GOOD
Symmetry	VERY GOOD
Fluorescence	NONE
Inscription(s)	IGI LG775633675

Comments: This Laboratory Grown Diamond was created by Chemical Vapor Deposition (CVD) growth process. Type IIa



THIS DOCUMENT WAS PRODUCED WITH THE FOLLOWING SECURITY MEASURES: SPECIAL DOCUMENT PAPER, INK SCREENS, WATERMARK BACKGROUND DESIGNS, HOLOGRAM AND OTHER SECURITY FEATURES NOT LISTED AND DO EXCEED DOCUMENT SECURITY INDUSTRY GUIDELINES.