



ELECTRONIC COPY

LG775640158
Report verification at igi.org



February 18, 2026

IGI Report Number **LG775640158**

Description **LABORATORY GROWN DIAMOND**

Shape and Cutting Style **ROUND BRILLIANT**

Measurements **8.17 - 8.22 X 4.98 MM**

GRADING RESULTS

Carat Weight **2.02 CARATS**

Color Grade **E**

Clarity Grade **VVS 2**

Cut Grade **EXCELLENT**

February 18, 2026

IGI Report Number **LG775640158**

Description **LABORATORY GROWN DIAMOND**

Shape and Cutting Style **ROUND BRILLIANT**

Measurements **8.17 - 8.22 X 4.98 MM**

GRADING RESULTS

Carat Weight **2.02 CARATS**

Color Grade **E**

Clarity Grade **VVS 2**

Cut Grade **EXCELLENT**

ADDITIONAL GRADING INFORMATION

Polish **EXCELLENT**

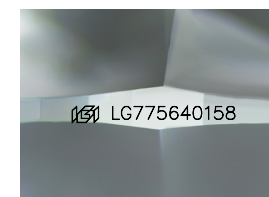
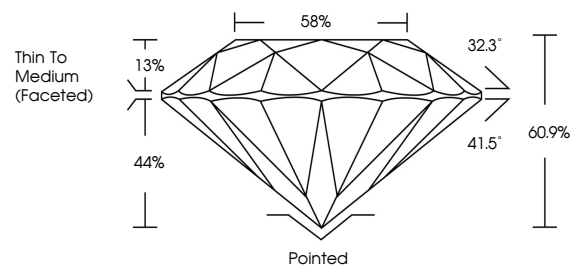
Symmetry **EXCELLENT**

Fluorescence **NONE**

Inscription(s) **IGI LG775640158**

Comments: This Laboratory Grown Diamond was created by Chemical Vapor Deposition (CVD) growth process. Type IIa

PROPORTIONS



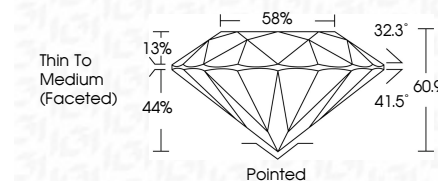
Sample Image Used

COLOR

D E F G H I J Faint Very Light Light

CLARITY

FL	IF	VVS ¹⁻²	VS ¹⁻²	SI ¹⁻²	I ¹⁻³
Flawless	Internally Flawless	Very Very Slightly Included	Very Slightly Included	Slightly Included	Included



ADDITIONAL GRADING INFORMATION

Polish **EXCELLENT**

Symmetry **EXCELLENT**

Fluorescence **NONE**

Inscription(s) **IGI LG775640158**

Comments: This Laboratory Grown Diamond was created by Chemical Vapor Deposition (CVD) growth process. Type IIa



IGI



February 18, 2026
IGI Report No LG775640158
ROUND BRILLIANT

8.17 - 8.22 X 4.98 MM

2.02 CARATS
E

Carat Weight
Color Grade
Clarity Grade
Depth
Table
Girdle

VVS 2
EXCELLENT
60.9%
88%

Thin To Medium (Faceted)

Pointed
EXCELLENT
EXCELLENT
NONE
IGI LG775640158

Culet
Polish
Symmetry
Fluorescence
Inscriptions(s)

Comments: This Laboratory Grown Diamond was created by Chemical Vapor Deposition (CVD) growth process. Type IIa