



**ELECTRONIC COPY**

LG776608153  
Report verification at igi.org



March 3, 2026  
IGI Report Number **LG776608153**  
Description **LABORATORY GROWN DIAMOND**  
Shape and Cutting Style **SQUARE CUSHION MODIFIED BRILLIANT**  
Measurements **11.74 X 11.41 X 7.20 MM**  
**GRADING RESULTS**  
Carat Weight **8.01 CARATS**  
Color Grade **F**  
Clarity Grade **VS 2**

March 3, 2026  
IGI Report Number **LG776608153**  
Description **LABORATORY GROWN DIAMOND**  
Shape and Cutting Style **SQUARE CUSHION MODIFIED BRILLIANT**  
Measurements **11.74 X 11.41 X 7.20 MM**

**GRADING RESULTS**

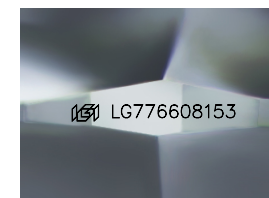
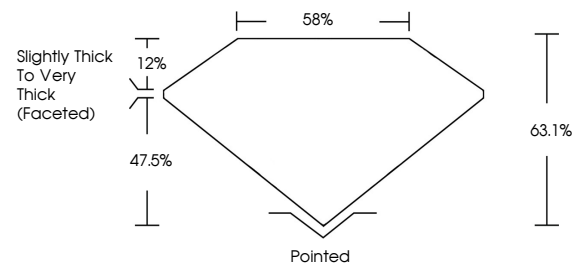
Carat Weight **8.01 CARATS**  
Color Grade **F**  
Clarity Grade **VS 2**

**ADDITIONAL GRADING INFORMATION**

Polish **EXCELLENT**  
Symmetry **EXCELLENT**  
Fluorescence **NONE**  
Inscription(s) **IGI LG776608153**

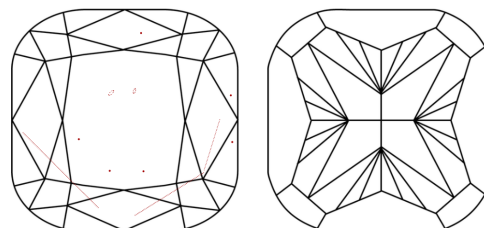
Comments: This Laboratory Grown Diamond was created by Chemical Vapor Deposition (CVD) growth process. Type IIa

**PROPORTIONS**



Sample Image Used

**CLARITY CHARACTERISTICS**



**KEY TO SYMBOLS**

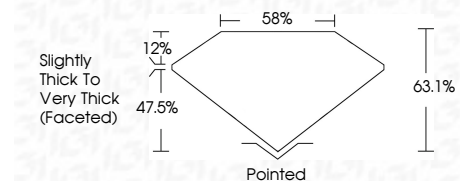
Red symbols indicate internal characteristics.  
Green symbols indicate external characteristics.

**COLOR**

D E F G H I J Faint Very Light Light

**CLARITY**

FL	IF	VS <sup>1-2</sup>	VS <sup>1-2</sup>	SI <sup>1-2</sup>	I <sup>1-3</sup>
Flawless	Internally Flawless	Very Very Slightly Included	Very Slightly Included	Slightly Included	Included



**ADDITIONAL GRADING INFORMATION**

Polish **EXCELLENT**  
Symmetry **EXCELLENT**  
Fluorescence **NONE**  
Inscription(s) **IGI LG776608153**  
Comments: This Laboratory Grown Diamond was created by Chemical Vapor Deposition (CVD) growth process. Type IIa



March 3, 2026  
IGI Report No **LG776608153**  
**SQUARE CUSHION MODIFIED BRILLIANT**  
**11.74 X 11.41 X 7.20 MM**  
**8.01 CARATS**  
Carat Weight **F**  
Color Grade **VS 2**  
Depth **63.1%**  
Table **58%**  
Girdle **Slightly Thick To Very Thick (Faceted)**  
Culet **Pointed**  
Polish **EXCELLENT**  
Symmetry **EXCELLENT**  
Fluorescence **NONE**  
Inscription(s) **IGI LG776608153**  
Comments: This Laboratory Grown Diamond was created by Chemical Vapor Deposition (CVD) growth process. Type IIa