



**INTERNATIONAL  
GEMOLOGICAL  
INSTITUTE**

**ELECTRONIC COPY**



February 27, 2026

IGI Report Number **LG776609318**

**PEAR MODIFIED BRILLIANT**

**LABORATORY GROWN DIAMOND**

**8.20 X 5.16 X 2.90 MM**

Carat Weight **0.88 CARAT**

Color Grade **FANCY VIVID GREEN**

Clarity Grade **VS 1**

Polish **VERY GOOD**

Symmetry **VERY GOOD**

Fluorescence **NONE**

Inscription(s) **IGI LG776609318**

Comments: This Laboratory Grown Diamond was created by Chemical Vapor Deposition (CVD) growth process. Indications of post-growth treatment.

**LABORATORY GROWN DIAMOND REPORT**

February 27, 2026

IGI Report Number

**LG776609318**

Description

**LABORATORY GROWN DIAMOND**

Shape and Cutting Style

**PEAR MODIFIED BRILLIANT**

Measurements

**8.20 X 5.16 X 2.90 MM**

**GRADING RESULTS**

Carat Weight

**0.88 CARAT**

Color Grade

**FANCY VIVID GREEN**

Clarity Grade

**VS 1**

**ADDITIONAL GRADING INFORMATION**

Polish

**VERY GOOD**

Symmetry

**VERY GOOD**

Fluorescence

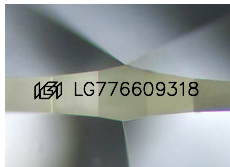
**NONE**

Inscription(s)

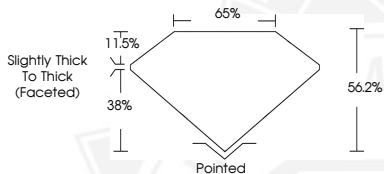
**IGI LG776609318**

Comments: This Laboratory Grown Diamond was created by Chemical Vapor Deposition (CVD) growth process.

Indications of post-growth treatment.



Sample Image Used



February 27, 2026

IGI Report Number **LG776609318**

**PEAR MODIFIED BRILLIANT**

**LABORATORY GROWN DIAMOND**

**8.20 X 5.16 X 2.90 MM**

Carat Weight **0.88 CARAT**

Color Grade **FANCY VIVID GREEN**

Clarity Grade **VS 1**

Polish **VERY GOOD**

Symmetry **VERY GOOD**

Fluorescence **NONE**

Inscription(s) **IGI LG776609318**

Comments: This Laboratory Grown Diamond was created by Chemical Vapor Deposition (CVD) growth process. Indications of post-growth treatment.



THIS DOCUMENT WAS PRODUCED WITH THE FOLLOWING SECURITY MEASURES: SPECIAL DOCUMENT PAPER, INK SCREENS, WATERMARK, BACKGROUND DESIGNS, HOLOGRAM AND OTHER SECURITY FEATURES NOT LISTED AND DO EXCEED DOCUMENT SECURITY INDUSTRY GUIDELINES.

For terms & conditions and to verify this report, please visit [www.igi.org](http://www.igi.org)