



**ELECTRONIC COPY**

LG776620122  
Report verification at igi.org



February 19, 2026

IGI Report Number **LG776620122**

Description **LABORATORY GROWN DIAMOND**

Shape and Cutting Style **ROUND BRILLIANT**

Measurements **8.95 - 9.03 X 5.26 MM**

**GRADING RESULTS**

Carat Weight **2.58 CARATS**

Color Grade **I**

Clarity Grade **VS 1**

Cut Grade **EXCELLENT**

February 19, 2026

IGI Report Number **LG776620122**

Description **LABORATORY GROWN DIAMOND**

Shape and Cutting Style **ROUND BRILLIANT**

Measurements **8.95 - 9.03 X 5.26 MM**

**GRADING RESULTS**

Carat Weight **2.58 CARATS**

Color Grade **I**

Clarity Grade **VS 1**

Cut Grade **EXCELLENT**

**ADDITIONAL GRADING INFORMATION**

Polish **EXCELLENT**

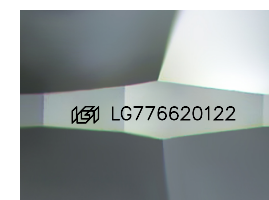
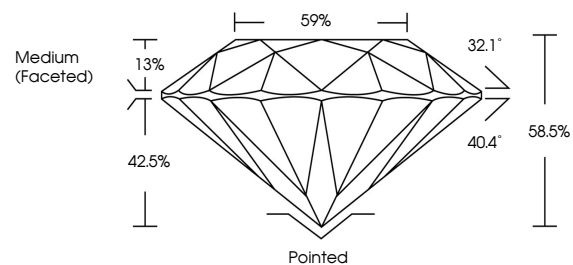
Symmetry **EXCELLENT**

Fluorescence **NONE**

Inscription(s) **IGI LG776620122**

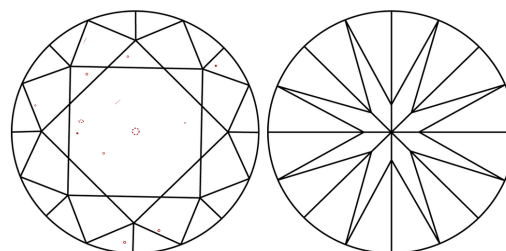
Comments: This Laboratory Grown Diamond was created by Chemical Vapor Deposition (CVD) growth process.  
Type IIa

**PROPORTIONS**



Sample Image Used

**CLARITY CHARACTERISTICS**



**KEY TO SYMBOLS**

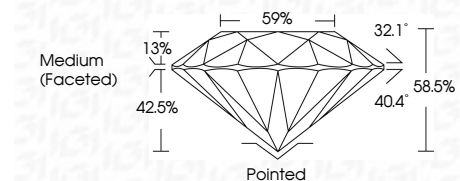
Red symbols indicate internal characteristics.  
Green symbols indicate external characteristics.

**COLOR**

D E F G H I J Faint Very Light Light

**CLARITY**

FL	IF	VS <sup>1-2</sup>	VS <sup>1-2</sup>	SI <sup>1-2</sup>	I <sup>1-3</sup>
Flawless	Internally Flawless	Very Very Slightly Included	Very Slightly Included	Slightly Included	Included



**ADDITIONAL GRADING INFORMATION**

Polish **EXCELLENT**

Symmetry **EXCELLENT**

Fluorescence **NONE**

Inscription(s) **IGI LG776620122**

Comments: This Laboratory Grown Diamond was created by Chemical Vapor Deposition (CVD) growth process.  
Type IIa



**IGI**



February 19, 2026	IGI Report No LG776620122	ROUND BRILLIANT	2.58 CARATS	I	VS 1	EXCELLENT	EXCELLENT	EXCELLENT	EXCELLENT	IGI LG776620122
8.95 - 9.03 X 5.26 MM	Carat Weight	Color Grade	Clarity Grade	Depth	Table	Girdle	Culet	Polish	Symmetry	Fluorescence
Medium (Faceted)	Pointed	EXCELLENT	EXCELLENT	EXCELLENT	EXCELLENT	EXCELLENT	NONE	NONE	NONE	NONE

Comments: This Laboratory Grown Diamond was created by Chemical Vapor Deposition (CVD) growth process.  
Type IIa