



**LABORATORY GROWN DIAMOND REPORT**

February 23, 2026  
 IGI Report Number **LG776622820**  
 Description **LABORATORY GROWN DIAMOND**  
 Shape and Cutting Style **ROUND BRILLIANT**  
 Measurements **6.37 - 6.41 X 3.88 MM**

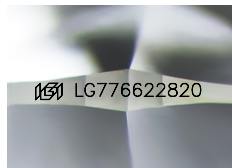
**GRADING RESULTS**

Carat Weight **0.97 CARAT**  
 Color Grade **E**  
 Clarity Grade **VVS 1**  
 Cut Grade **IDEAL**

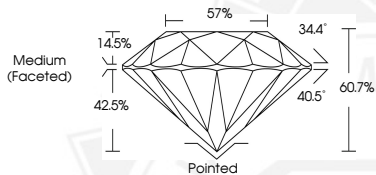
**ADDITIONAL GRADING INFORMATION**

Polish **EXCELLENT**  
 Symmetry **EXCELLENT**  
 Fluorescence **NONE**  
 Inscription(s) **IGI LG776622820**

Comments: As Grown - No indication of post-growth treatment. This Laboratory Grown Diamond was created by High Pressure High Temperature (HPHT) growth process. Type II



Sample Image Used



February 23, 2026  
 IGI Report Number **LG776622820**  
**ROUND BRILLIANT**  
**LABORATORY GROWN DIAMOND**  
**6.37 - 6.41 X 3.88 MM**  
 Carat Weight **0.97 CARAT**  
 Color Grade **E**  
 Clarity Grade **VVS 1**  
 Cut Grade **IDEAL**  
 Polish **EXCELLENT**  
 Symmetry **EXCELLENT**  
 Fluorescence **NONE**  
 Inscription(s) **IGI LG776622820**

Comments: As Grown - No indication of post-growth treatment. This Laboratory Grown Diamond was created by High Pressure High Temperature (HPHT) growth process. Type II



February 23, 2026  
 IGI Report Number **LG776622820**  
**ROUND BRILLIANT**  
**LABORATORY GROWN DIAMOND**  
**6.37 - 6.41 X 3.88 MM**  
 Carat Weight **0.97 CARAT**  
 Color Grade **E**  
 Clarity Grade **VVS 1**  
 Cut Grade **IDEAL**  
 Polish **EXCELLENT**  
 Symmetry **EXCELLENT**  
 Fluorescence **NONE**  
 Inscription(s) **IGI LG776622820**

Comments: As Grown - No indication of post-growth treatment. This Laboratory Grown Diamond was created by High Pressure High Temperature (HPHT) growth process. Type II

THIS DOCUMENT WAS PRODUCED WITH THE FOLLOWING SECURITY MEASURES: SPECIAL DOCUMENT PAPER, INK SCREENS, WATERMARK, BACKGROUND DESIGNS, HOLOGRAM AND OTHER SECURITY FEATURES NOT LISTED AND DO EXCEED DOCUMENT SECURITY INDUSTRY GUIDELINES.