



**ELECTRONIC COPY**

LG776637492  
Report verification at igi.org



March 10, 2026

IGI Report Number **LG776637492**

Description **LABORATORY GROWN DIAMOND**

Shape and Cutting Style **PEAR MODIFIED BRILLIANT**

Measurements **11.39 X 7.18 X 4.33 MM**

**GRADING RESULTS**

Carat Weight **2.50 CARATS**

Color Grade **FANCY INTENSE YELLOW**

Clarity Grade **VVS 2**

March 10, 2026

IGI Report Number **LG776637492**

Description **LABORATORY GROWN DIAMOND**

Shape and Cutting Style **PEAR MODIFIED BRILLIANT**

Measurements **11.39 X 7.18 X 4.33 MM**

**GRADING RESULTS**

Carat Weight **2.50 CARATS**

Color Grade **FANCY INTENSE YELLOW**

Clarity Grade **VVS 2**

**ADDITIONAL GRADING INFORMATION**

Polish **EXCELLENT**

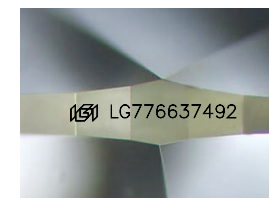
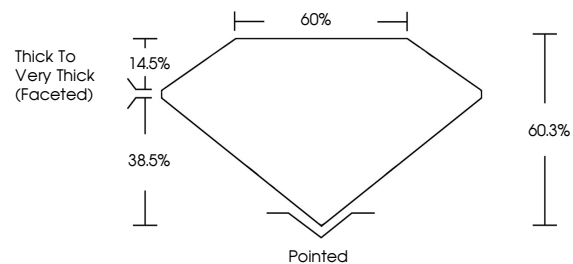
Symmetry **EXCELLENT**

Fluorescence **NONE**

Inscription(s) **IGI LG776637492**

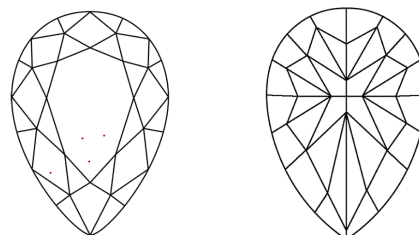
Comments: This Laboratory Grown Diamond was created by Chemical Vapor Deposition (CVD) growth process.

**PROPORTIONS**



Sample Image Used

**CLARITY CHARACTERISTICS**



**KEY TO SYMBOLS**

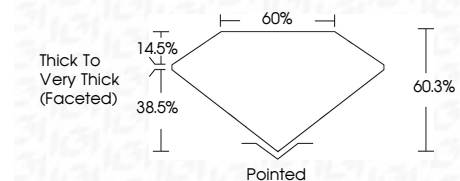
Red symbols indicate internal characteristics.  
Green symbols indicate external characteristics.

**COLOR**

D E F G H I J Faint Very Light Light

**CLARITY**

FL	IF	VVS <sup>1-2</sup>	VS <sup>1-2</sup>	SI <sup>1-2</sup>	I <sup>1-3</sup>
Flawless	Internally Flawless	Very Very Slightly Included	Very Slightly Included	Slightly Included	Included



**ADDITIONAL GRADING INFORMATION**

Polish **EXCELLENT**

Symmetry **EXCELLENT**

Fluorescence **NONE**

Inscription(s) **IGI LG776637492**

Comments: This Laboratory Grown Diamond was created by Chemical Vapor Deposition (CVD) growth process.



**IGI**



March 10, 2026  
IGI Report No LG776637492  
**PEAR MODIFIED BRILLIANT**

11.39 X 7.18 X 4.33 MM  
2.50 CARATS  
FANCY INTENSE YELLOW  
VVS 2  
60.3%  
60%

Thick to Very Thick (Faceted)  
Pointed  
EXCELLENT  
EXCELLENT  
NONE  
IGI LG776637492

Comments: This Laboratory Grown Diamond was created by Chemical Vapor Deposition (CVD) growth process.