



ELECTRONIC COPY

LG776640129
Report verification at igi.org



March 14, 2026

IGI Report Number **LG776640129**

Description **LABORATORY GROWN DIAMOND**

Shape and Cutting Style **PRINCESS CUT**

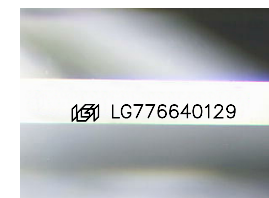
Measurements **7.62 X 7.49 X 5.32 MM**

GRADING RESULTS

Carat Weight **2.59 CARATS**

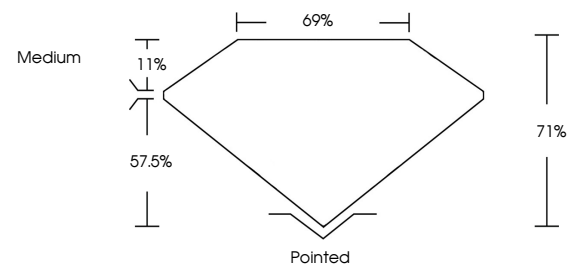
Color Grade **G**

Clarity Grade **VVS 2**

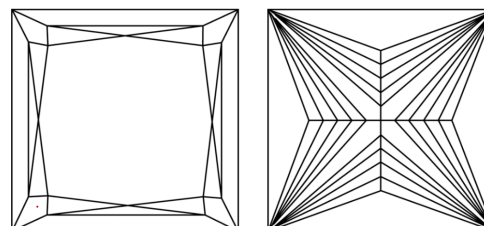


Sample Image Used

PROPORTIONS



CLARITY CHARACTERISTICS



KEY TO SYMBOLS

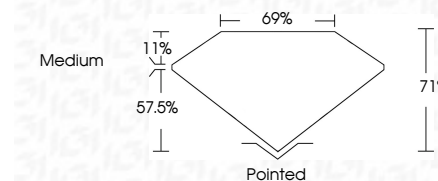
Red symbols indicate internal characteristics.
Green symbols indicate external characteristics.

COLOR

D E F G H I J Faint Very Light Light

CLARITY

FL	IF	VVS ¹⁻²	VS ¹⁻²	SI ¹⁻²	I ¹⁻³
Flawless	Internally Flawless	Very Very Slightly Included	Very Slightly Included	Slightly Included	Included



ADDITIONAL GRADING INFORMATION

Polish **EXCELLENT**

Symmetry **EXCELLENT**

Fluorescence **NONE**

Inscription(s) **IGI LG776640129**

Comments: This Laboratory Grown Diamond was created by Chemical Vapor Deposition (CVD) growth process. Type IIa



IGI



March 14, 2026
IGI Report No LG776640129
PRINCESS CUT

2.59 CARATS
G

7.62 X 7.49 X 5.32 MM
VVS 2
71%
69%
Medium

Pointed
EXCELLENT
EXCELLENT
NONE
IGI LG776640129

Culet
Polish
Symmetry
Fluorescence
Inscription(s)

Comments: This Laboratory Grown Diamond was created by Chemical Vapor Deposition (CVD) growth process. Type IIa