



**ELECTRONIC COPY**

LG776641755  
Report verification at igi.org



March 13, 2026  
IGI Report Number **LG776641755**

Description **LABORATORY GROWN DIAMOND**

Shape and Cutting Style **CUT CORNERED  
RECTANGULAR MODIFIED  
BRILLIANT**

Measurements **10.72 X 7.62 X 5.16 MM**

**GRADING RESULTS**

Carat Weight **4.03 CARATS**

Color Grade **FANCY VIVID PINK**

Clarity Grade **VVS 2**

**LABORATORY GROWN DIAMOND REPORT**

March 13, 2026

IGI Report Number **LG776641755**

Description **LABORATORY GROWN DIAMOND**

Shape and Cutting Style **CUT CORNERED RECTANGULAR  
MODIFIED BRILLIANT**

Measurements **10.72 X 7.62 X 5.16 MM**

**GRADING RESULTS**

Carat Weight **4.03 CARATS**

Color Grade **FANCY VIVID PINK**

Clarity Grade **VVS 2**

**ADDITIONAL GRADING INFORMATION**

Polish **EXCELLENT**

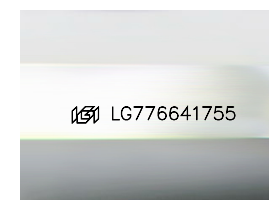
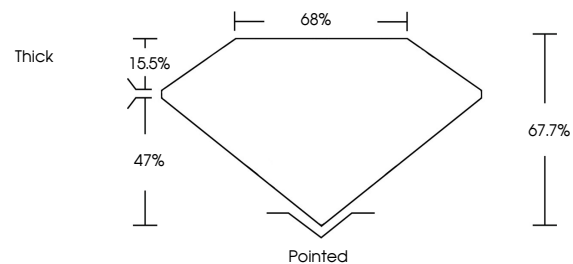
Symmetry **EXCELLENT**

Fluorescence **SLIGHT**

Inscription(s) **IGI LG776641755**

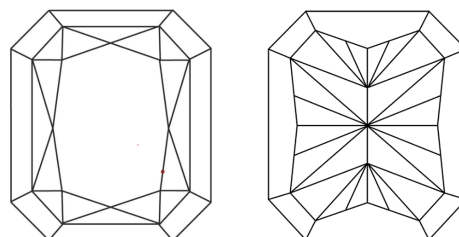
Comments: This Laboratory Grown Diamond was created by Chemical Vapor Deposition (CVD) growth process.  
Indications of post-growth treatment.

**PROPORTIONS**



Sample Image Used

**CLARITY CHARACTERISTICS**



**KEY TO SYMBOLS**

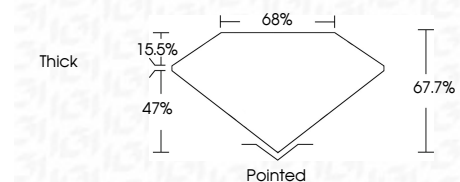
Red symbols indicate internal characteristics.  
Green symbols indicate external characteristics.

**COLOR**

D E F G H I J Faint Very Light Light

**CLARITY**

FL	IF	VVS <sup>1-2</sup>	VS <sup>1-2</sup>	SI <sup>1-2</sup>	I <sup>1-3</sup>
Flawless	Internally Flawless	Very Very Slightly Included	Very Slightly Included	Slightly Included	Included



**ADDITIONAL GRADING INFORMATION**

Polish **EXCELLENT**

Symmetry **EXCELLENT**

Fluorescence **SLIGHT**

Inscription(s) **IGI LG776641755**

Comments: This Laboratory Grown Diamond was created by Chemical Vapor Deposition (CVD) growth process.  
Indications of post-growth treatment.



March 13, 2026  
IGI Report No LG776641755  
CUT CORNERED RECT. MODIFIED BRILLIANT

10.72 X 7.62 X 5.16 MM

4.03 CARATS  
FANCY VIVID PINK

VVS 2  
67.7%  
68% Thick

Pointed  
EXCELLENT  
EXCELLENT  
SLIGHT

IGI LG776641755

Comments: This Laboratory Grown Diamond was created by Chemical Vapor Deposition (CVD) growth process.  
Indications of post-growth treatment.