



**INTERNATIONAL
GEMOLOGICAL
INSTITUTE**

ELECTRONIC COPY

LABORATORY GROWN DIAMOND REPORT

February 19, 2026
 IGI Report Number **LG776645192**
 Description **LABORATORY GROWN DIAMOND**
 Shape and Cutting Style **MARQUISE BRILLIANT**
 Measurements **8.91 X 4.53 X 2.79 MM**

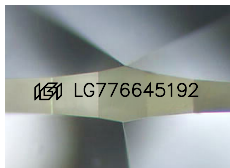
GRADING RESULTS

Carat Weight **0.62 CARAT**
 Color Grade **E**
 Clarity Grade **VVS 2**

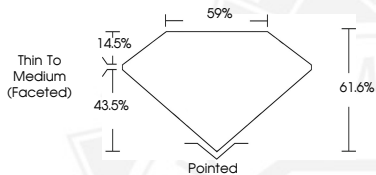
ADDITIONAL GRADING INFORMATION

Polish **EXCELLENT**
 Symmetry **EXCELLENT**
 Fluorescence **NONE**
 Inscription(s) **IGI LG776645192**

Comments: This Laboratory Grown Diamond was created by Chemical Vapor Deposition (CVD) growth process. Type IIa



Sample Image Used



February 19, 2026
 IGI Report Number **LG776645192**
MARQUISE BRILLIANT
LABORATORY GROWN DIAMOND
8.91 X 4.53 X 2.79 MM
 Carat Weight **0.62 CARAT**
 Color Grade **E**
 Clarity Grade **VVS 2**
 Polish **EXCELLENT**
 Symmetry **EXCELLENT**
 Fluorescence **NONE**
 Inscription(s) **IGI LG776645192**

Comments: This Laboratory Grown Diamond was created by Chemical Vapor Deposition (CVD) growth process. Type IIa



February 19, 2026
 IGI Report Number **LG776645192**
MARQUISE BRILLIANT
LABORATORY GROWN DIAMOND
8.91 X 4.53 X 2.79 MM
 Carat Weight **0.62 CARAT**
 Color Grade **E**
 Clarity Grade **VVS 2**
 Polish **EXCELLENT**
 Symmetry **EXCELLENT**
 Fluorescence **NONE**
 Inscription(s) **IGI LG776645192**

Comments: This Laboratory Grown Diamond was created by Chemical Vapor Deposition (CVD) growth process. Type IIa



THIS DOCUMENT WAS PRODUCED WITH THE FOLLOWING SECURITY MEASURES: SPECIAL DOCUMENT PAPER, INK SCREENS, WATERMARK, BACKGROUND DESIGNS, HOLOGRAM AND OTHER SECURITY FEATURES NOT LISTED AND DO EXCEED DOCUMENT SECURITY INDUSTRY GUIDELINES.

For terms & conditions and to verify this report, please visit www.igi.org