



**ELECTRONIC COPY**

LG776656672  
Report verification at igi.org



February 27, 2026

IGI Report Number **LG776656672**

Description **LABORATORY GROWN DIAMOND**

Shape and Cutting Style **ROUND BRILLIANT**

Measurements **6.53 - 6.59 X 3.98 MM**

**GRADING RESULTS**

Carat Weight **1.05 CARAT**

Color Grade **D**

Clarity Grade **VVS 2**

Cut Grade **IDEAL**

February 27, 2026

IGI Report Number **LG776656672**

Description **LABORATORY GROWN DIAMOND**

Shape and Cutting Style **ROUND BRILLIANT**

Measurements **6.53 - 6.59 X 3.98 MM**

**GRADING RESULTS**

Carat Weight **1.05 CARAT**

Color Grade **D**

Clarity Grade **VVS 2**

Cut Grade **IDEAL**

**ADDITIONAL GRADING INFORMATION**

Polish **EXCELLENT**

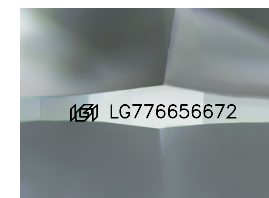
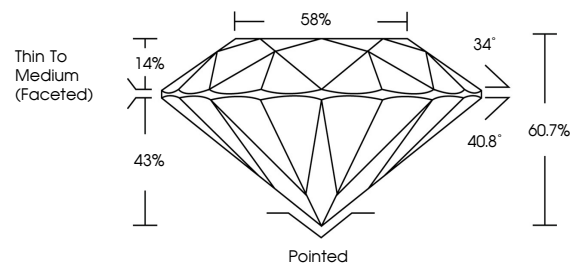
Symmetry **EXCELLENT**

Fluorescence **NONE**

Inscription(s) **IGI LG776656672**

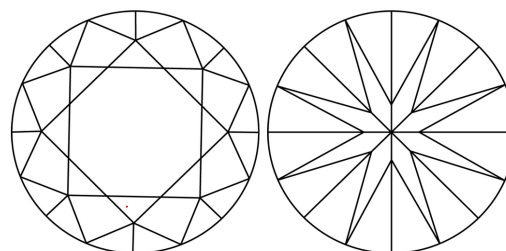
Comments: This Laboratory Grown Diamond was created by Chemical Vapor Deposition (CVD) growth process. Type IIa

**PROPORTIONS**



Sample Image Used

**CLARITY CHARACTERISTICS**



**KEY TO SYMBOLS**

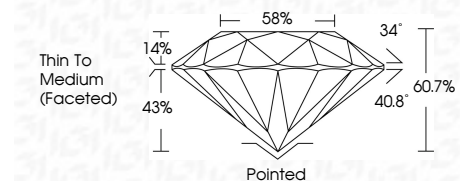
Red symbols indicate internal characteristics.  
Green symbols indicate external characteristics.

**COLOR**

D E F G H I J Faint Very Light Light

**CLARITY**

FL	IF	VVS <sup>1-2</sup>	VS <sup>1-2</sup>	SI <sup>1-2</sup>	I <sup>1-3</sup>
Flawless	Internally Flawless	Very Very Slightly Included	Very Slightly Included	Slightly Included	Included



**ADDITIONAL GRADING INFORMATION**

Polish **EXCELLENT**

Symmetry **EXCELLENT**

Fluorescence **NONE**

Inscription(s) **IGI LG776656672**

Comments: This Laboratory Grown Diamond was created by Chemical Vapor Deposition (CVD) growth process. Type IIa



**IGI**



February 27, 2026	1.05 CARAT	D	VVS 2	IDEAL	60.7%	58%	Pointed	EXCELLENT	EXCELLENT	NONE	IGI LG776656672
IGI Report No LG776656672	Carat Weight	Color Grade	Clarity Grade	Cut Grade	Depth	Table	Thin To Medium (Faceted)	Polish	Symmetry	Fluorescence	Inscription(s)
ROUND BRILLIANT	6.53 - 6.59 X 3.98 MM	D	VVS 2	IDEAL	60.7%	58%	Pointed	EXCELLENT	EXCELLENT	NONE	IGI LG776656672

Comments: This Laboratory Grown Diamond was created by Chemical Vapor Deposition (CVD) growth process. Type IIa