



**ELECTRONIC COPY**

LG776657750  
Report verification at igi.org



February 28, 2026

IGI Report Number **LG776657750**

Description **LABORATORY GROWN DIAMOND**

Shape and Cutting Style **ROUND BRILLIANT**

Measurements **6.61 - 6.65 X 3.96 MM**

**GRADING RESULTS**

Carat Weight **1.07 CARAT**

Color Grade **H**

Clarity Grade **VS 1**

Cut Grade **IDEAL**

February 28, 2026

IGI Report Number **LG776657750**

Description **LABORATORY GROWN DIAMOND**

Shape and Cutting Style **ROUND BRILLIANT**

Measurements **6.61 - 6.65 X 3.96 MM**

**GRADING RESULTS**

Carat Weight **1.07 CARAT**

Color Grade **H**

Clarity Grade **VS 1**

Cut Grade **IDEAL**

**ADDITIONAL GRADING INFORMATION**

Polish **EXCELLENT**

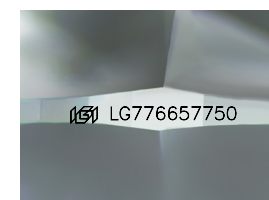
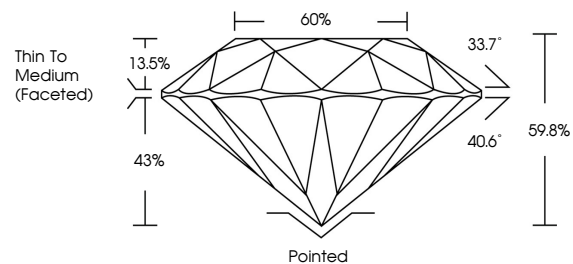
Symmetry **EXCELLENT**

Fluorescence **NONE**

Inscription(s) **IGI LG776657750**

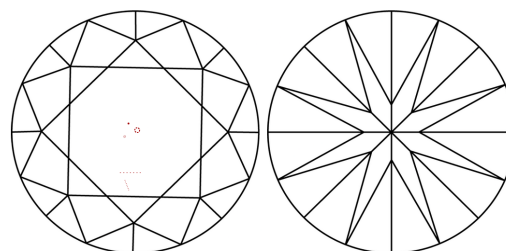
Comments: This Laboratory Grown Diamond was created by Chemical Vapor Deposition (CVD) growth process. Type IIa

**PROPORTIONS**



Sample Image Used

**CLARITY CHARACTERISTICS**



**KEY TO SYMBOLS**

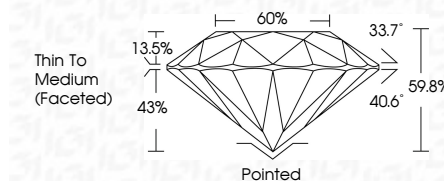
Red symbols indicate internal characteristics.  
Green symbols indicate external characteristics.

**COLOR**

D E F G H I J Faint Very Light Light

**CLARITY**

FL	IF	VS <sup>1-2</sup>	VS <sup>1-2</sup>	SI <sup>1-2</sup>	I <sup>1-3</sup>
Flawless	Internally Flawless	Very Very Slightly Included	Very Slightly Included	Slightly Included	Included



**ADDITIONAL GRADING INFORMATION**

Polish **EXCELLENT**

Symmetry **EXCELLENT**

Fluorescence **NONE**

Inscription(s) **IGI LG776657750**

Comments: This Laboratory Grown Diamond was created by Chemical Vapor Deposition (CVD) growth process. Type IIa



February 28, 2026	IGI Report No LG776657750	ROUND BRILLIANT	6.61 - 6.65 X 3.96 MM	1.07 CARAT	H	VS 1	IDEAL	59.8%	60%	Thin To Medium (Faceted)	Pointed	EXCELLENT	EXCELLENT	NONE	IGI LG776657750
Cutter	Polish	Symmetry	Fluorescence	Inscription(s)	Cut Grade	Clarity Grade	Color Grade	Carat Weight	Carat Weight	Measurements	Shape and Cutting Style	Description	IGI Report Number	February 28, 2026	

Comments: This Laboratory Grown Diamond was created by Chemical Vapor Deposition (CVD) growth process. Type IIa