



February 24, 2026

IGI Report Number **LG776670078**

**ROUND BRILLIANT  
LABORATORY GROWN DIAMOND  
4.92 - 4.94 X 3.05 MM**

**0.45 CARAT  
D  
VS 1  
IDEAL  
EXCELLENT  
EXCELLENT  
NONE  
Inscription(s) IGI LG776670078**

Comments: As Grown - No indication of post-growth treatment. This Laboratory Grown Diamond was created by High Pressure High Temperature (HPHT) growth process. Type II

**LABORATORY GROWN DIAMOND REPORT**

February 24, 2026

IGI Report Number

**LG776670078**

Description

**LABORATORY GROWN DIAMOND**

Shape and Cutting Style

**ROUND BRILLIANT**

Measurements

**4.92 - 4.94 X 3.05 MM**

**GRADING RESULTS**

Carat Weight

**0.45 CARAT**

Color Grade

**D**

Clarity Grade

**VS 1**

Cut Grade

**IDEAL**

**ADDITIONAL GRADING INFORMATION**

Polish

**EXCELLENT**

Symmetry

**EXCELLENT**

Fluorescence

**NONE**

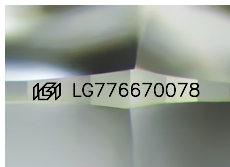
Inscription(s)

**IGI LG776670078**

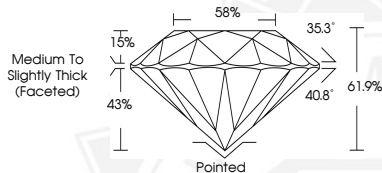
Comments: As Grown - No indication of post-growth treatment.

This Laboratory Grown Diamond was created by High Pressure High Temperature (HPHT) growth process.

Type II



Sample Image Used



February 24, 2026

IGI Report Number **LG776670078**

**ROUND BRILLIANT  
LABORATORY GROWN DIAMOND  
4.92 - 4.94 X 3.05 MM**

**0.45 CARAT  
D  
VS 1  
IDEAL  
EXCELLENT  
EXCELLENT  
NONE  
Inscription(s) IGI LG776670078**

Comments: As Grown - No indication of post-growth treatment. This Laboratory Grown Diamond was created by High Pressure High Temperature (HPHT) growth process. Type II



THIS DOCUMENT WAS PRODUCED WITH THE FOLLOWING SECURITY MEASURES: SPECIAL DOCUMENT PAPER, INK SCREENS, WATERMARK, BACKGROUND DESIGNS, HOLOGRAM AND OTHER SECURITY FEATURES NOT LISTED AND DO EXCEED DOCUMENT SECURITY INDUSTRY GUIDELINES.