



ELECTRONIC COPY

LG776673784
Report verification at igi.org



February 25, 2026

IGI Report Number **LG776673784**

Description **LABORATORY GROWN DIAMOND**

Shape and Cutting Style **OVAL BRILLIANT**

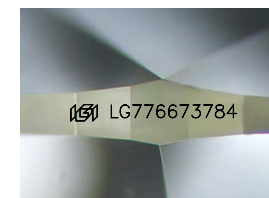
Measurements **8.08 X 5.72 X 3.48 MM**

GRADING RESULTS

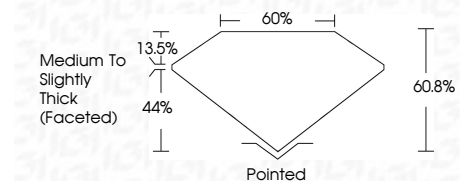
Carat Weight **1.01 CARAT**

Color Grade **E**

Clarity Grade **VVS 2**



Sample Image Used



ADDITIONAL GRADING INFORMATION

Polish **EXCELLENT**

Symmetry **EXCELLENT**

Fluorescence **NONE**

Inscription(s) **IGI LG776673784**

Comments: This Laboratory Grown Diamond was created by Chemical Vapor Deposition (CVD) growth process. Type IIa



February 25, 2026	IGI Report No LG776673784	1.01 CARAT	E	VVS 2	60.8%	60%	Medium to Slightly Thick (Faceted)	Pointed	EXCELLENT	EXCELLENT	NONE	IGI LG776673784
IGI Report No LG776673784	8.08 X 5.72 X 3.48 MM	Color Grade	Clarity Grade	Table	Girdle	Culet	Polish	Symmetry	Fluorescence	Inscription(s)	Comments: This Laboratory Grown Diamond was created by Chemical Vapor Deposition (CVD) growth process. Type IIa	

February 25, 2026
IGI Report Number **LG776673784**
Description **LABORATORY GROWN DIAMOND**
Shape and Cutting Style **OVAL BRILLIANT**
Measurements **8.08 X 5.72 X 3.48 MM**

GRADING RESULTS

Carat Weight **1.01 CARAT**

Color Grade **E**

Clarity Grade **VVS 2**

ADDITIONAL GRADING INFORMATION

Polish **EXCELLENT**

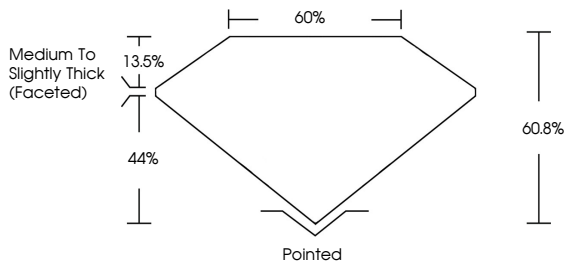
Symmetry **EXCELLENT**

Fluorescence **NONE**

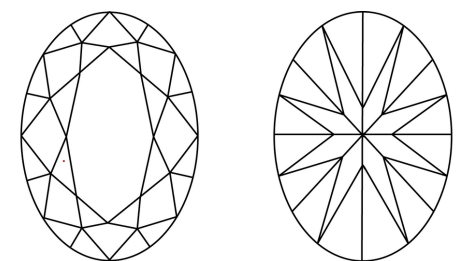
Inscription(s) **IGI LG776673784**

Comments: This Laboratory Grown Diamond was created by Chemical Vapor Deposition (CVD) growth process. Type IIa

PROPORTIONS



CLARITY CHARACTERISTICS



KEY TO SYMBOLS

Red symbols indicate internal characteristics.
Green symbols indicate external characteristics.

COLOR

D	E	F	G	H	I	J	Faint	Very Light	Light
---	---	---	---	---	---	---	-------	------------	-------

CLARITY

FL	IF	VVS ¹⁻²	VS ¹⁻²	SI ¹⁻²	I ¹⁻³
Flawless	Internally Flawless	Very Very Slightly Included	Very Slightly Included	Slightly Included	Included

