



ELECTRONIC COPY

LG776673961 Report verification at igi.org



February 19, 2026 IGI Report Number LG776673961 Description LABORATORY GROWN DIAMOND Shape and Cutting Style ROUND BRILLIANT Measurements 6.46 - 6.51 X 4.03 MM GRADING RESULTS Carat Weight 1.05 CARAT Color Grade D Clarity Grade INTERNALLY FLAWLESS Cut Grade IDEAL

February 19, 2026 IGI Report Number LG776673961 Description LABORATORY GROWN DIAMOND Shape and Cutting Style ROUND BRILLIANT Measurements 6.46 - 6.51 X 4.03 MM

GRADING RESULTS

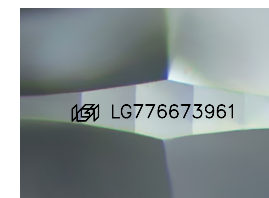
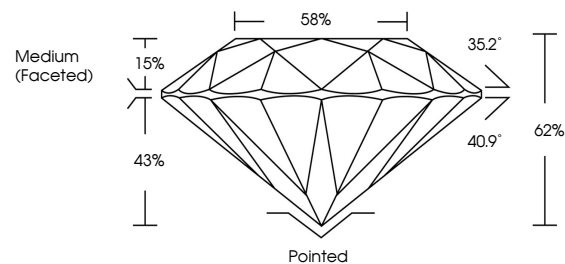
Carat Weight 1.05 CARAT Color Grade D Clarity Grade INTERNALLY FLAWLESS Cut Grade IDEAL

ADDITIONAL GRADING INFORMATION

Polish EXCELLENT Symmetry EXCELLENT Fluorescence NONE Inscription(s) IGI LG776673961

Comments: This Laboratory Grown Diamond was created by Chemical Vapor Deposition (CVD) growth process. Type IIa

PROPORTIONS



Sample Image Used

CLARITY CHARACTERISTICS



KEY TO SYMBOLS

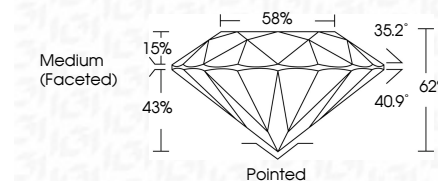
Red symbols indicate internal characteristics. Green symbols indicate external characteristics.

COLOR

D E F G H I J Faint Very Light Light

CLARITY

FL IF VS 1-2 VS 1-2 SI 1-2 I 1-3 Flawless Internally Flawless Very Very Slightly Included Very Slightly Included Slightly Included Included



ADDITIONAL GRADING INFORMATION

Polish EXCELLENT Symmetry EXCELLENT Fluorescence NONE Inscription(s) IGI LG776673961 Comments: This Laboratory Grown Diamond was created by Chemical Vapor Deposition (CVD) growth process. Type IIa



February 19, 2026 IGI Report No LG776673961 ROUND BRILLIANT 6.46 - 6.51 X 4.03 MM 1.05 CARAT D Color Grade EXCELLENT IF Clarity Grade IDEAL 62% Depth 58% Medium (Faceted) Polished EXCELLENT Pointed EXCELLENT Symmetry EXCELLENT Fluorescence NONE NONE Cut Grade IDEAL IGI LG776673961 Comments: This Laboratory Grown Diamond was created by Chemical Vapor Deposition (CVD) growth process. Type IIa