



March 24, 2026

IGI Report Number **LG776676258**

PEAR BRILLIANT

LABORATORY GROWN DIAMOND

7.31 X 4.41 X 2.47 MM

Carat Weight **0.46 CARAT**

Color Grade **E**

Clarity Grade **VS 1**

Polish **GOOD**

Symmetry **VERY GOOD**

Fluorescence **NONE**

Inscription(s) **IGI LG776676258**

Comments: This Laboratory Grown Diamond was created by Chemical Vapor Deposition (CVD) growth process. Type IIa

LABORATORY GROWN DIAMOND REPORT

March 24, 2026

IGI Report Number

LG776676258

Description

LABORATORY GROWN DIAMOND

Shape and Cutting Style

PEAR BRILLIANT

Measurements

7.31 X 4.41 X 2.47 MM

GRADING RESULTS

Carat Weight

0.46 CARAT

Color Grade

E

Clarity Grade

VS 1

ADDITIONAL GRADING INFORMATION

Polish

GOOD

Symmetry

VERY GOOD

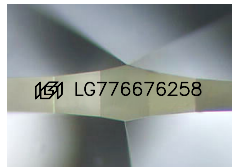
Fluorescence

NONE

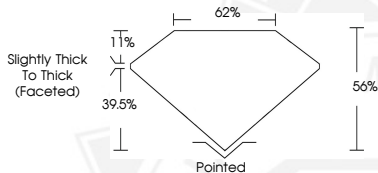
Inscription(s)

IGI LG776676258

Comments: This Laboratory Grown Diamond was created by Chemical Vapor Deposition (CVD) growth process. Type IIa



Sample Image Used



March 24, 2026

IGI Report Number **LG776676258**

PEAR BRILLIANT

LABORATORY GROWN DIAMOND

7.31 X 4.41 X 2.47 MM

Carat Weight **0.46 CARAT**

Color Grade **E**

Clarity Grade **VS 1**

Polish **GOOD**

Symmetry **VERY GOOD**

Fluorescence **NONE**

Inscription(s) **IGI LG776676258**

Comments: This Laboratory Grown Diamond was created by Chemical Vapor Deposition (CVD) growth process. Type IIa



THIS DOCUMENT WAS PRODUCED WITH THE FOLLOWING SECURITY MEASURES: SPECIAL DOCUMENT PAPER, INK SCREENS, WATERMARK, BACKGROUND DESIGNS, HOLOGRAM AND OTHER SECURITY FEATURES NOT LISTED AND DO EXCEED DOCUMENT SECURITY INDUSTRY GUIDELINES.